



重要的安全说明及注意事项

- 使用前必须阅读并理解产品说明书。
- 专业灯具，禁止儿童使用。当儿童靠近时，家长或监护人必须密切监督，以免儿童因碰撞灯具或私用灯具造成人身伤害。
- 本灯具并非普通照明灯具，不可用于普通照明，任何有过眼部损伤或眼部敏感的人群均应避免使用本灯具。
- 灯具点亮时，必须小心使用，禁止接触高温部件，如 LED 灯珠，以免造成灼伤。
- 倘若灯珠损坏或因热变形，应停止使用，并及时联系制造商、服务代理商或合格的维修人员更换灯珠，以免发生意外。
- 请勿使用损坏的设备或设备配件，待专业维修人员检查维修，确认设备正常方可使用。
- 在使用过程中，如果本产品由于跌落、受到挤压或遭受强烈冲击而造成外壳破裂的，请勿继续使用，以免因接触到内部电子元件而受到电击伤害。
- 请勿私自拆卸产品，如产品出现故障，须由本公司或授权的维修人员进行检查维修。
- 存放本设备之前，请确保设备已完全冷却。存放时，将电源线从设备上拔出。设备应放置于设备便携包内或通风干燥处。
- 本厂不推荐的产品附件，请勿使用，以免导致火灾、触电或人身伤害。
- 清洁本设备时，请勿用湿布擦拭，请用干布，软布擦拭设备污垢。
- 本设备没有防水性能，请让设备保持干燥，请勿将本设备浸入水中或其他液体中。设备需安装在干燥且通风处，避免在雨天、潮湿、多尘或过热环境下使用。请勿将任何物体置于灯具上或使液体流入灯具内部，以免发生意外。
- 产品内置锂电池，此类产品请使用专用的充电器进行充电，并且按正确的操作说明，在规定的电压、温度范围内使用。
- 一经发现，擅自检修设备，将取消一年保修期，维修需要收取相关费用。
- 安全说明依据本厂严格测试制定，设备设计和规格如有变更，恕不另行通知。客户可以上神牛官网查看最新的电子版说明，了解产品最新资讯。

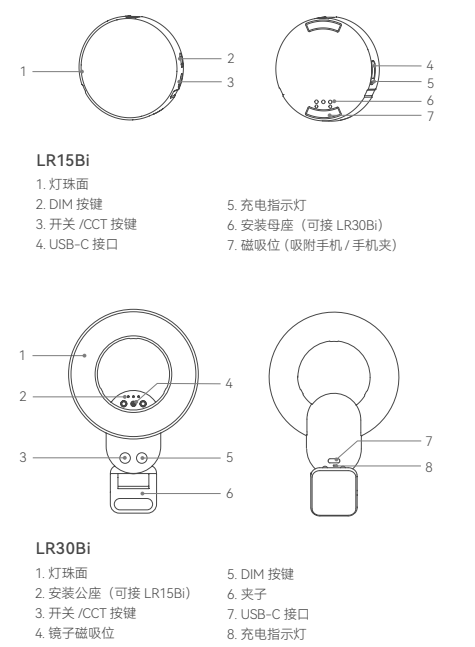
警告

- 使用错误类型的电池替换可能导致安全保护失效。
- 将电池投入火源或高温烤箱，或机械性挤压、切割电池，可能引发爆炸。
- 将电池置于极端高温环境（如阳光直射、火源或高温表面）可能导致爆炸或易燃液体 / 气体泄漏。
- 电池暴露于极低气压环境可能引发爆炸或可燃液体 / 气体泄漏。

注意

更换错误型号的电池可能导致火灾或爆炸风险！

部件名称



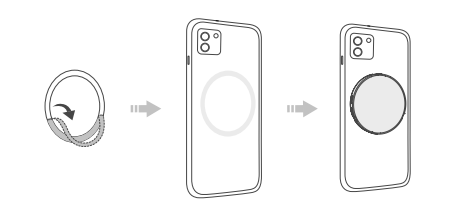
物品清单



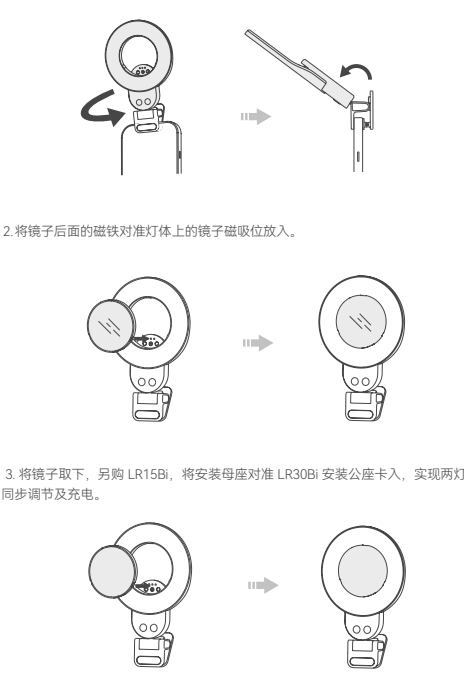
温馨提示：说明书中线图均为示意图，仅供参考。由于产品不断更新与升级，产品实物与线图可能存在差异，请以实物为准。

安装方法

- LR15Bi**
- 将手机夹吸附在磁吸位，夹子固定于手机，适合前置摄像头补光。
 - 撕下引磁环的背胶贴纸后，粘至无磁吸的手机或手机壳背部，再将蓝膜撕下，自带磁吸的手机可直接吸附在灯体磁吸位，适合后置摄像头补光。



- LR30Bi**
- 将夹子固定于手机，可 360°旋转及垂直 90°调节补光方向。
 - 将镜子后面的磁铁对准灯体上的镜子磁吸位放入。
 - 将镜子取下，另购 LR15Bi，将安装母座对准 LR30Bi 安装公座卡入，实现两灯同步调节及充电。



电源管理

开机：长按开关按键亮灯。
关机：再次长按开关按键灭灯。
充电：使用充电线插入灯体 USB-C 接口，再接通电源。

CCT 按键

开机后短按一次 CCT 按键调节一档色温：2800K、3200K、4500K、5600K、6500K 循环调节。

DIM 按键

开机后短按一次 DIM 按键调节一档亮度：20%、40%、60%、80%、100% 循环调节。

照度数据

色温	测试条件	照度单位	0.3m	0.5m	1m
2800K	LR15Bi	lux	273	102	27
		fc	25	9	3
	LR30Bi	lux	424	167	42
		fc	39	16	4
	LR15Bi+LR30Bi	lux	705	259	69
		fc	66	24	6
3200K	LR15Bi	lux	275	103	27
		fc	26	10	3
	LR30Bi	lux	437	170	43
		fc	41	16	4
	LR15Bi+LR30Bi	lux	715	264	70
		fc	66	25	6
4500K	LR15Bi	lux	269	100	26
		fc	25	9	2
	LR30Bi	lux	461	179	45
		fc	43	17	4
	LR15Bi+LR30Bi	lux	737	276	72
		fc	68	26	7
5600K	LR15Bi	lux	286	106	28
		fc	27	10	3
	LR30Bi	lux	476	185	47
		fc	44	17	4
	LR15Bi+LR30Bi	lux	764	283	74
		fc	71	26	7
6500K	LR15Bi	lux	303	112	30
		fc	28	10	3
	LR30Bi	lux	487	189	48
		fc	45	18	4
	LR15Bi+LR30Bi	lux	793	293	77
		fc	74	27	7

以上数据均为平均值，非绝对值，以上测试皆在灯体 100% 亮度下进行。

规格参数

型号	LR15Bi	LR30Bi
充电时长*	2 小时	
使用时长*	1 小时 15 分钟 (100% 亮度)	
USB-C 接口	输入：5V ≈ 2A	
亮度档位	20%、40%、60%、80%、100%	
色温档位	2800 K、3200 K、4500 K、5600 K、6500 K	
CRI	≈ 97	
TLCI	≈ 98	
工作环境温度	-10℃ ~ 35℃	
裸灯尺寸*	56 × 56 × 11 mm	101 × 37 × 159 mm
裸灯净重*	33 g	83 g

规格和参数如有变更，恕不另行通知。

Declaration of Conformity

GODOX Photo Equipment Co.,Ltd. hereby declares that the This equipment are in compliance with the essential requirements and other relevant provisions of EU Directive GPSR (EU) 2023/988,2014/30/EU. They are allowed to be used in all EU member states.
For more information of DoC, Please click this web link:
<https://www.godox.com/eu-declaration-of-conformity/>

FCC Caution

This device complies with part 15 of the FCC Rules. Operation is subject to the following two conditions:
(1) This device may not cause harmful interference, and
(2) this device must accept any interference received, including interference that may cause undesired operation.
Any Changes or modifications not expressly approved by the party responsible for compliance could void the user's authority to operate the equipment.

IC Warning

This device complies with Industry Canada licence-exempt RSS standard(s). Operation is subject to the following two conditions:
(1) This device may not cause interference, and
(2) This device must accept any interference, including interference that may cause undesired operation of the device.

Le présent appareil est conforme aux CNR d'Industrie Canada applicables aux appareils radio exempts de licence. L'exploitation est autorisée aux deux conditions suivantes:
(1) l'appareil ne doit pas produire de brouillage, et
(2) l'utilisateur de l'appareil doit accepter tout brouillage radioélectrique subi, même si le brouillage est susceptible d'en compromettre le fonctionnement.

产品保修

尊敬的用户，本保修卡是申请保修服务的重要凭证，请您配合销售商填写并妥善保管，谢谢！

产品信息	型号	产品条形码
用户信息	姓名	联系电话
	通信地址	
销售商信息	名称	
	联系电话	
	通信地址	
	销售日期	
备注		

注：此表应由销售商盖章确认。

适用产品

本文件适用于相关《产品保修信息》（见后面说明）所列产品，其他非属此范围的产品或部件（如促销品、赠品及其他出厂后附加的部件等）不在此保修承诺内。

保修期

产品及部件的相应保修期按相关的《产品保修信息》执行。保修期自产品首次购买日起算，购买日以购买产品时保修卡登记日期为准。

如何获得保修服务

您可直接与产品销售商或授权服务机构联系，也可拨打神牛产品售后服务电话，与我们联系，由我们的服务人员为您安排服务。申请保修时，您应提供有效的保修卡作为保修凭证，方可获得保修。如您不能提供有效的保修卡，则在我们确认产品或部件属于保修范围的情况下，也可以为您提供保修，但这不作为我们的义务。

不适用保修情况

如产品存在下列情况，本文件项下的保证和服务将不适用：①产品或部件超过相应保修期；②错误或不适当使用、维护或保管导致的故障或损坏，如：不当搬运；非按产品合理预期用途使用；不当插拔外接设备；跌落或外力挤压；接触或暴露于不适当温度、溶剂、酸碱、水浸或潮湿环境；③由非神牛授权机构或人员安装、修理、更改、添加或拆卸造成的故障或损坏；④产品或部件原有识别信息被修改变更或删除；⑤无有效保修卡；⑥使用非合法授权、非标准或非公开发行的软件造成的故障或损坏；⑦因不可抗力或意外事件造成的故障或损坏；⑧其他非因产品本身质量问题导致的故障或损坏。遇上述情况，您应向相关责任方寻求解决，神牛对此不承担任何责任。因非在保修期或保修范围内的部件、附件或软件导致产品不能正常使用的，不是保修范围内的故障。产品使用过程中正常的脱色，磨损和消耗，不是保修范围内的故障。

产品保修和服务支持信息

产品的保修期和服务类型按以下《产品保修信息》执行：

部件	保修期（月）	保修服务类型
内部电路板	12	客户送修
其他（例如光效附件、各类线材或其他包装）	无	无保修

神牛产品售后服务电话 0755-29609320-8062

Important Safety Instructions and Precautions

- Before use, please read and understand the instruction manual.
- Professional lighting is prohibited for children. When children are near, parents or accompanying persons must supervise closely to prevent children from personal injury due to collision with lamps or private use of lamps.
- This lighting product is not ordinary lighting product and cannot be used for general lighting. Anyone who has suffered eye damage or has sensitive eyes should avoid using this product.
- When the lamp is on, it must be used with care. Do not touch high-temperature parts, such as LED lamp beads, to avoid burns.
- If the lamp bead is damaged or deformed by heat, stop using this equipment, and contact the manufacturer, service agent or qualified maintenance personnel to replace the lamp bead in time to avoid accidents.
- Do not use damaged equipment or accessories, and wait for professional maintenance personnel to check and repair to confirm being normal before use.
- During using, if the casing of this product is broken due to being dropped, squeezed or subjected to strong impact, please do not use it, so as to avoid electric shock injury due to contact with internal electronic components.
- Do not disassemble the product without permission. If the product fails, it must be checked and repaired by authorized maintenance personnel.
- Before storing, make sure that the equipment has cooled down completely. For storage, unplug the power cord from the equipment. The equipment should be placed in the carrying case or in a ventilated dry place.
- Do not use accessories that are not recommended by our factory to avoid fire, electric shock or personal injury.
- When cleaning the device, please do not use a wet cloth to wipe, please use a dry, soft cloth to wipe the dirt on the device.
- This equipment is not waterproof, please keep it dry and do not immerse it in water or other liquids. The equipment should be installed in a dry and ventilated place, and avoid using it in rainy, humid, dusty or overheated environments. Do not place any objects on the lamp or let liquid flow into the lamp to avoid accidents.
- This product has built-in lithium batteries. Please use specified chargers, and use them within a proper range of the specified voltage and temperature according to the correct operating instructions.
- If it is found that the equipment is repaired without authorization, the one-year warranty period will be cancelled and relevant fees will be charged for maintenance.
- The safety instructions are formulated according to the strict testing of the factory, and the design and specifications of the equipment are subject to change without prior notice. For latest product information, please check the GODOX website and view latest electronic instruction.

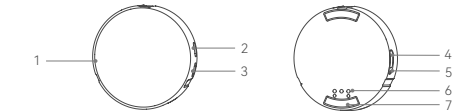
WARNING

- replacement of a battery with an incorrect type may defeat a safeguard.
- disposal of a battery into fire or a hot oven, or mechanically crushing or cutting of battery, may result in an explosion.
- leaving a battery in an extremely high temperature surroundingenvironment, such as sunshine, fire, or hot surface may result in an explosion or the leakage of flammable liquid or gas.
- a battery subjected to extremely low air pressure may result in an explosion or the leakage of flammable liquid or gas.

CAUTION

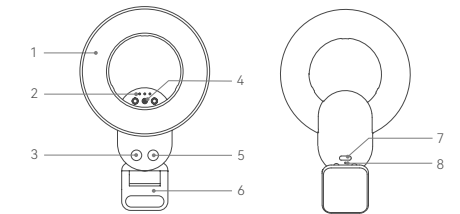
Risk of fire or explosion if the battery is replaced by an incorrect type!

Names of Parts



LR15Bi

- Light Beads
- DIM Button
- Power Switch/CCT Button
- USB-C Port
- Charging Indicator
- Female Socket (connect to LR30Bi)
- Magnetic Spot (for mobile phone/phone clip)



LR30Bi

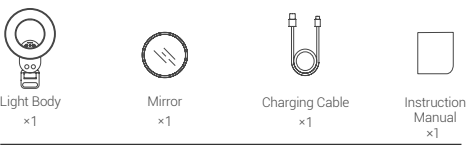
- Light Beads
- Male Socket (connect to LR15Bi)
- Power Switch/CCT Button
- Mirror Attaching Site
- DIM Button
- Clip
- USB-C Port
- Charging Indicator

What's Inside

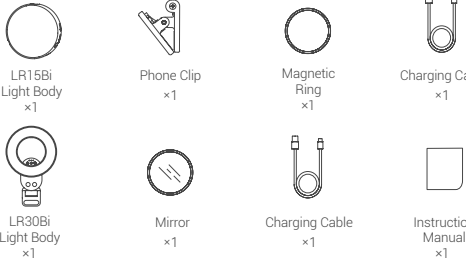
LR15Bi



LR30Bi



LR Kit

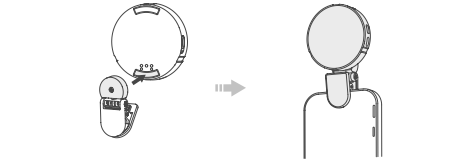


Note: Due to continuous updates and upgrades of the products, there may be differences between the actual products and the pictures. Therefore, the pictures are for reference only, products to prevail in kind.

Installation

LR15Bi

1.Attach the phone clip onto the magnetic spot, mount the mobile phone to the phone clip, then it's available for front camera filling light.

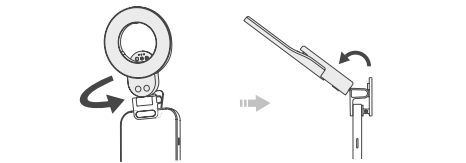


2.Tear off the adhesive back sticker of the magnetic ring and attach it to the back of the mobile phone or phone case without magnetic suction. Then tear off the blue film to magnetically attach it to the magnetic spot on the light body. Mobile phone with magnetic suction can be directly attached to the magnetic spot on the light body. Then it's available for rear camera filling light.

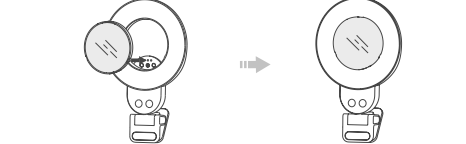


LR30Bi

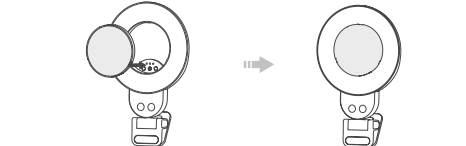
1.Mount the mobile phone to the clip for 360° rotary and 90° vertical filling light.



2. Align the magnet on the back of the mirror with the mirror attaching site on the light body and place it.



3.Remove the mirror, align the female socket on the separately purchased LR15Bi with the male socket on LR30Bi and insert in, then the two lights can be adjusted and charged simultaneously.



Power Management

Power On: Press and hold the power switch button until light up.
Power Off: Press and hold the power switch button until light off.
Charging: Insert the charging cable into the USB-C port on the light body, then connect to power source.

CCT Button

Power on the device, press the CCT button to adjust the CCT value among the following levels in recycle: 2800K, 3200K, 4500K, 5600K, 6500K.

DIM Button

Power on the device, press the DIM button to adjust the DIM value among the following levels in recycle: 20%, 40%, 60%, 80%, 100%.

Illuminance Data

CCT	Testing Condition	Unit	0.3m	0.5m	1m
2800K	LR15Bi	lux	273	102	27
		fc	25	9	3
	LR30Bi	lux	424	167	42
		fc	39	16	4
	LR15Bi+LR30Bi	lux	705	259	69
		fc	66	24	6
3200K	LR15Bi	lux	275	103	27
		fc	26	10	3
	LR30Bi	lux	437	170	43
		fc	41	16	4
	LR15Bi+LR30Bi	lux	715	264	70
		fc	66	25	6
4500K	LR15Bi	lux	269	100	26
		fc	25	9	2
	LR30Bi	lux	461	179	45
		fc	43	17	4
	LR15Bi+LR30Bi	lux	737	276	72
		fc	68	26	7
5600K	LR15Bi	lux	286	106	28
		fc	27	10	3
	LR30Bi	lux	476	185	47
		fc	44	17	4
	LR15Bi+LR30Bi	lux	764	283	74
		fc	71	26	7
6500K	LR15Bi	lux	303	112	30
		fc	28	10	3
	LR30Bi	lux	487	189	48
		fc	45	18	4
	LR15Bi+LR30Bi	lux	793	293	77
		fc	74	27	7

Note: All the data are average values instead of absolute values. All the above tests are based on the condition of 100% brightness.

Technical Data

Model	LR15Bi	LR30Bi
Charging Time≈	2h	
Battery Life ≈	1h15min (100% DIM)	
USB-C Port	Input: 5V ≈ 2A	
Brightness Levels	20%, 40%, 60%, 80%, 100%	
CCT Values	2800 K, 3200 K, 4500 K, 5600 K, 6500 K	
CRI	≈ 97	
TLCI	≈ 98	
Working Environment Temperature	-10°C ~ 35°C	
Bare Light Dimension ≈	2.2"×2.2"×0.43"	3.98"×1.46"×6.26"
Bare Light Net Weight ≈	33 g	83 g

Specifications and data may subject to changes without notice.

Warranty

Dear customers, as this warranty card is an important certificate to apply for our mainte- nance service, please fill in the following form in coordination with the seller and safe-keep it. Thank you!

Product Information	Model	Product Code Number
Customer Information	Name	Contact Number
	Address	
Seller Information	Name	
	Contact Number	
	Address	
	Date of Sale	
Note		

Note: This form shall be sealed by the seller.

Applicable Products

The document applies to the products listed on the Product Maintenance Information (see below for further information). Other products or accessories (e.g. promotional items, giveaways and additional accessories attached, etc.) are not included in this warranty scope.

Warranty Period

The warranty period of products and accessories is implemented according to the relevant Product Maintenance Information. The warranty period is calculated from the day (purchase date) when the product is bought for the first time, And the purchase date is considered as the date registered on the warranty card when buying the product.

How to Get the Maintenance Service

If maintenance service is needed, you can directly contact the product distributor or authorized service institutions. You can also contact the Godox after-sale service call and we will offer you service. When applying for maintenance service, you should provide valid warranty card. If you cannot provide valid warranty card, we may offer you maintenance service once confirmed that the product or accessory is involved in the maintenance scope, but that shall not be considered as our obligation.

Inapplicable Cases

The guarantee and service offered by this document are not applicable in the following cases: ① The product or accessory has expired its warranty period; ② Breakage or damage caused by inappropriate usage, maintenance or preservation, such as improper packing, improper usage, improper plugging in/out external equipment, falling off or squeezing by external force, contacting or exposing to the improper temperature, solvent, acid, base, flooding and damp environments, etc; ③ Breakage or damage caused by non-authorized institution or staff in the process of installation, maintenance, alternation, addition and detachment; ④ The original identifying information of product or accessory is modified, alternated, or removed; ⑤ No valid warranty card; ⑥ Breakage or damage caused by using illegally authorized, nonstandard or non-public released software; ⑦ Breakage or damage caused by force majeure or accident; ⑧ Breakage or damage that could not be attributed to the product itself. Once met these situations above, you should seek solutions from the related responsible parties and Godox assumes no responsibility. The damage caused by parts, accessories and software that beyond the warranty period or scope is not included in our maintenance scope. The normal discoloration, abrasion and consumption are not the breakage within the maintenance scope.

Maintenance and Service Support Information

The warranty period and service types of products are implemented according to the following Product Maintenance Information:

Parts	Maintenance Period (month)	Warranty Service Type
Internal circuit board	12	Customer sends the product to designated site
Other Items (optical accessories, cables, package, etc)	No	Without warranty

Godox After-sale Service Call +86-755-29609320 (8062)



深圳市神牛摄影器材有限公司
地址: 深圳市宝安区福海街道塘尾社区福川工业园厂房 2 栋
电话: 0755-29609320 (8062) 传真: 0755-25723423 邮箱: godox@godox.com

GODOX Photo Equipment Co., Ltd.
Add: Building 2, Yaochuan Industrial Zone, Tangwei Community, Fuhai Street, Bao'an District, Shenzhen 518103, China Tel: +86-755-29609320(8062)
Fax: +86-755-25723423 E-mail: godox@godox.com

www.godox.com
Made in China | 705-LR15B0-00

