

KNOWLED LiteFlow K1

电影灯光反射板
Cine Lighting Reflector
使用手册
Instruction Manual

前言

感谢您购买神牛电影灯光反射板。

神牛全新推出创新且独特的布光系统—电影灯光反射板。精密的反射板设计，能将光源准确引导到需要布光位置，精准控制漫射光的同时，减少拍摄现场对旗帜或框架的依赖。令人惊喜的是，精密制造的复合金属面，仅 3% 光损失和 100% 颜色还原。

反射板共有四个尺寸：70mm × 70mm、150mm × 150mm、250mm × 250mm、500mm × 500mm。

- 1号(蓝色)：硬质光线(扩散度 13.2%)
 - 2号(黄色)：轻柔光线(扩散度 52%)
 - 3号(绿色)：柔和光线(扩散度 95%)
 - 4号(红色)：柔和条形光线(扩散度 94%)
- 以上数据出自神牛实验室。

光效展示(以 LiteFlow 50 为例)



1号(蓝色)



2号(黄色)



3号(绿色)

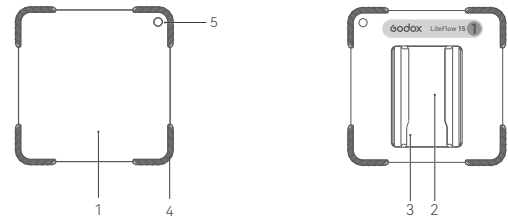


4号(红色)

注意事项

- 反射板易刮花，请带专用的手套进行操作。
- 为确保反射板保持无污染状态，建议使用后立即清洁反射板；否则，反射板上的油渍长时间未被清洁，后续可能难以清洁。
- 反射板易刮花，运输或安装时需轻放轻拿。

部件名称



1. 反射板
2. 安装滑槽
3. 导向槽
4. 安全角
5. 安全绳孔

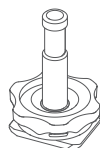
清洁步骤说明

- 使用前请戴上手套进行清洁；
- 将清洁液均匀地喷洒在反射板表面；
- 耐心等待 15-30 秒，让清洁液彻底分解反射板表面的油渍；
- 最后使用清洁布擦干反射板表面。

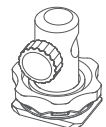
注：为保证清洁效果，清洁布请勿重复使用。

安装滑槽座WMS/滑槽座WMR

根据所需，您可安装滑槽座 WMS 或滑槽座 WMR。



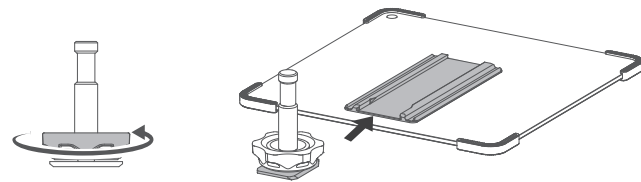
滑槽座 WMS 端口为 5/8" 公座，安装此滑槽座可插入具备 5/8" 母座的连接杆。



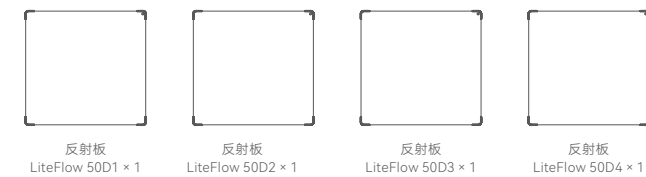
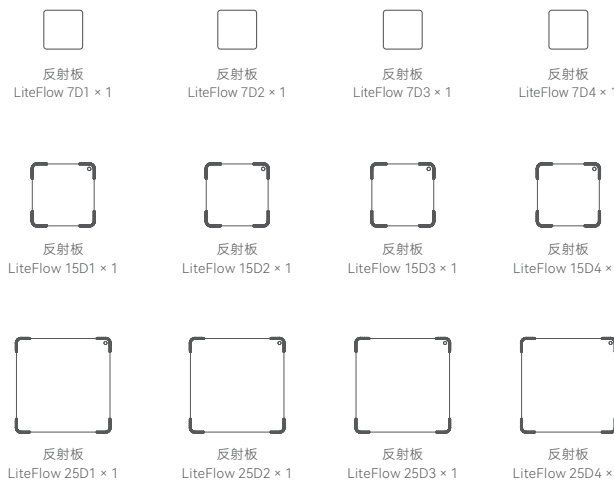
滑槽座 WMR 端口为竖方向母座和横方向母座，安装此滑槽座可插入具备公座的连接杆。

安装滑槽座：

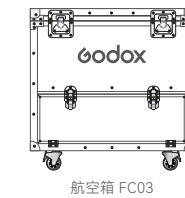
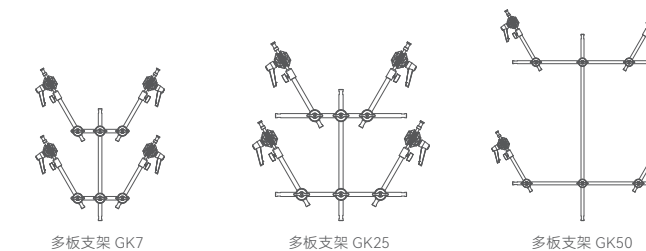
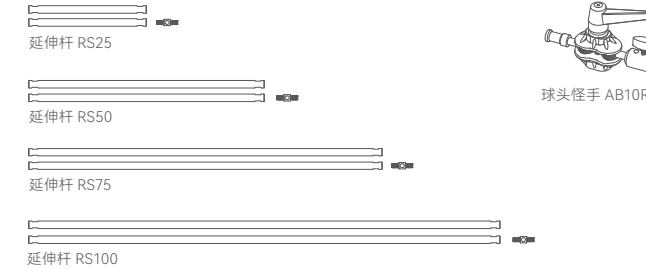
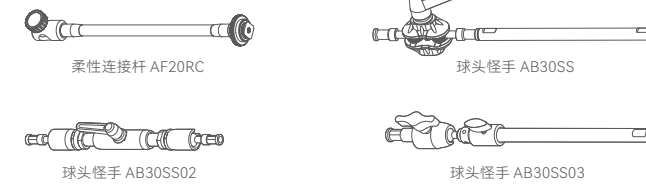
逆时针拧松滑槽座滑片上的旋轮，接着将滑槽座从反射板滑槽底部滑入，滑到所需位置后顺时针旋转拧紧旋轮。



LiteFlow K1 物料清单



另购附件



规格参数

型号	尺寸	净重 [≈]
LiteFlow 7D1/LiteFlow 7D2/LiteFlow 7D3/LiteFlow 7D4	70mm × 70mm	46g
LiteFlow 15D1/LiteFlow 15D2/LiteFlow 15D3/LiteFlow 15D4	150mm × 150mm	167g
LiteFlow 25D1/LiteFlow 25D2/LiteFlow 25D3/LiteFlow 25D4	250mm × 250mm	403g
LiteFlow 50D1/LiteFlow 50D2/LiteFlow 50D3/LiteFlow 50D4	500mm × 500mm	1.43kg

Foreword

Thank you for purchasing!

Introducing the innovative and unique lighting diffusion system by Godox - the Cine Lighting Reflector. With its precision-designed reflector, this cutting-edge system accurately guides the light source to the desired lighting positions, allowing for precise control over the scattering of light while minimizing reliance on flags or frames on the set. What's truly astonishing is the meticulously crafted aluminum coating surface, which boasts only 3% light loss and 100% color accuracy.

The reflector is available in four different sizes to accommodate various lighting requirements: 2.75" × 2.75", 5.91" × 5.91", 9.84" × 9.84", 19.69" × 19.69".

DIFF 1(Blue color): Hard ray of light(diffusion rate is 13.2%)

DIFF 2(Yellow color): Medium soft ray of light(diffusion rate is 52%)

DIFF 3(Green color): Soft ray of light(diffusion rate is 95%)

DIFF 4(Red color): Soft strip ray of light(diffusion rate is 94%)

The above data is provided by Godox laboratory.

Lighting Effects Display (Using LiteFlow 50 as an example)



DIFF 1 (Blue color)



DIFF 2 (Yellow color)



DIFF 3 (Green color)

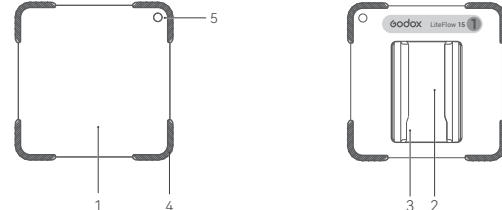


DIFF 4 (Red color)

Cautions:

- The reflector is prone to scratching. Please use specialized gloves when handling.
- To ensure the reflector remains free from stains, it is recommended to clean it immediately after use. Failure to do so may result in difficulty cleaning the reflector if oil stains are left unattended for an extended period.
- The reflector is prone to scratching, so handle with care during transportation or installation.

Name of Parts



1. Reflector 2. Slide Rail 3. Slot 4. Corner Guards 5. Safety Wire Hole

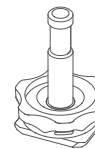
Cine Reflector Cleaning Instructions

- Please wear gloves to clean during use.
- Spray an appropriate amount of cleaning solution evenly onto the surface of the reflector.
- Let the cleaning solution sit for 15-30 seconds to thoroughly break down any oil stains.
- Use a cleaning cloth to dry the reflective surface.

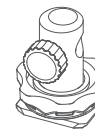
Note: To ensure cleaning effectiveness, please do not reuse the cleaning cloth.

Installation of WMS/ WMR

Depending on your requirements, you can install either the Wheel Mount Stud WMS or the Wheel Mount Receiver WMR.

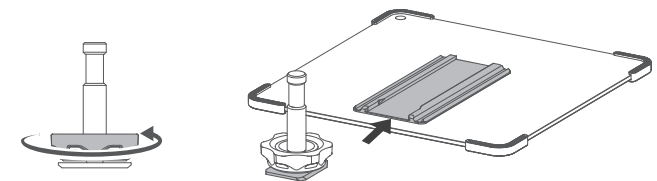


The **WMS** features a 5/8" male socket port. By installing WMS you can insert a connecting rod with a 5/8" female socket.

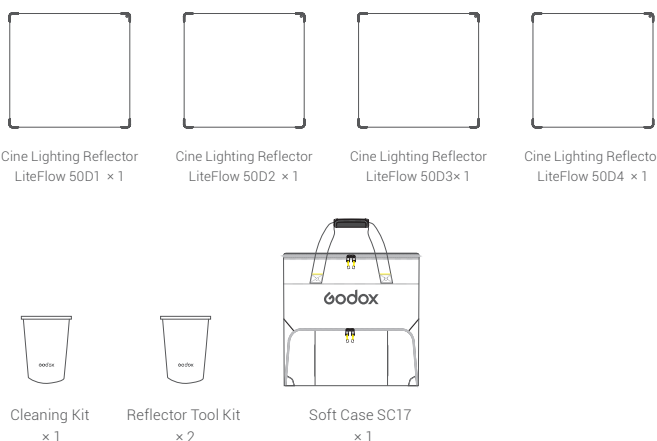
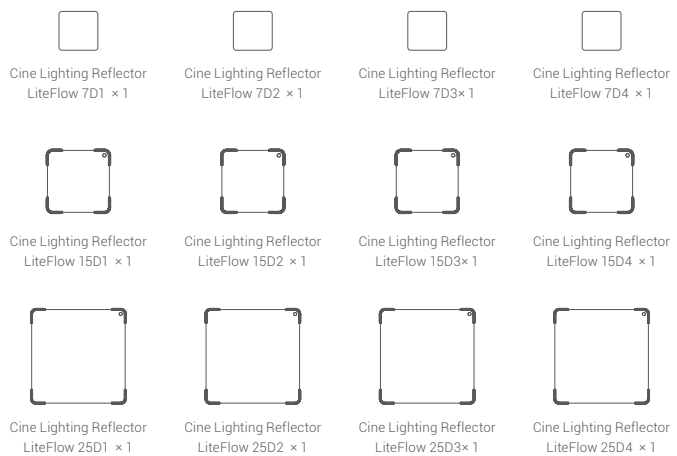


The **WMR** features both vertical and horizontal female socket ports. By installing WMR you can insert a connecting rod with a male socket.

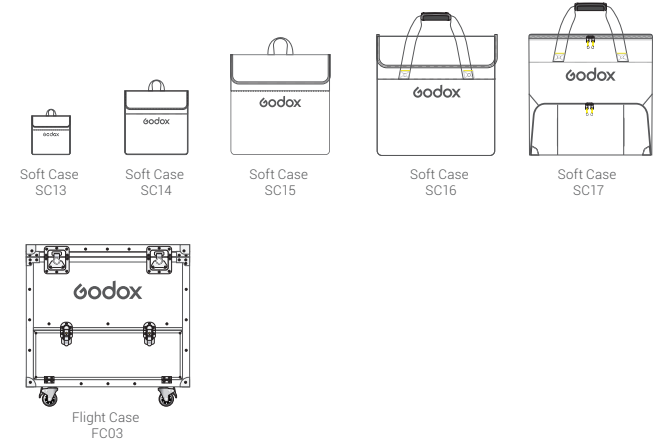
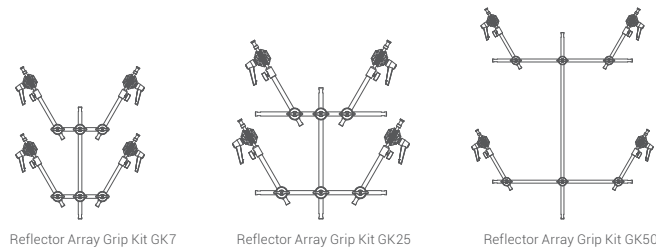
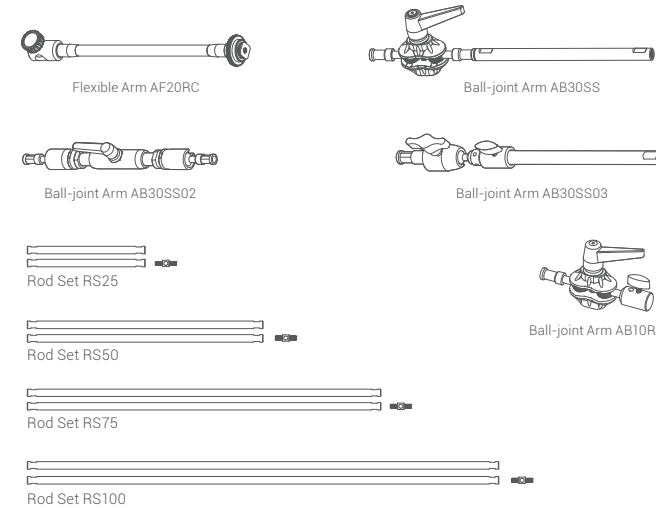
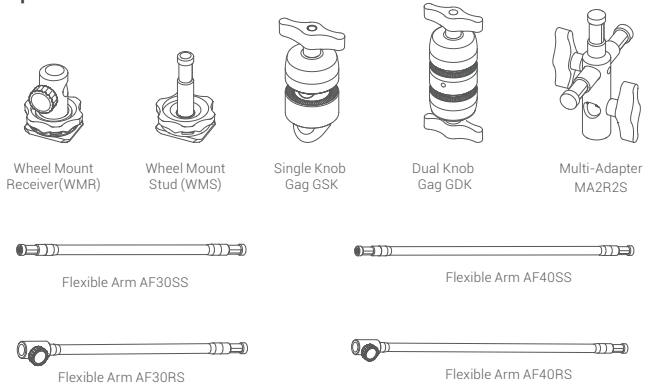
Installing WMS/WMR: To install WMS/WMR, loosen the wheel on the WMS slider by turning it counter-clockwise. Then insert it into the groove at the bottom of the reflector and slide it to the desired position. Once in position, turn the wheel clockwise to tighten and secure it in place.



What's Inside LiteFlow K1



Optional Accessories



Specification

Model	Size	Net weight≈
LiteFlow 7D1/LiteFlow 7D2/LiteFlow 7D3/LiteFlow 7D4	2.75" × 2.75"	46g
LiteFlow 15D1/LiteFlow 15D2/LiteFlow 15D3/LiteFlow 15D4	5.91" × 5.91"	167g
LiteFlow 25D1/LiteFlow 25D2/LiteFlow 25D3/LiteFlow 25D4	9.84" × 9.84"	403g
LiteFlow 50D1/LiteFlow 50D2/LiteFlow 50D3/LiteFlow 50D4	19.69" × 19.69"	1.43kg



Wechat Official Account
神牛微信公众号

深圳市神牛摄影器材有限公司
地址: 深圳市宝安区福海街道塘尾社区耀川工业区厂房2栋 电话: 0755-29609320(8062)
传真: 0755-25723423 邮箱: godox@godox.com

GODOX Photo Equipment Co.,Ltd.
Add.: Building 2, Yaochuan Industrial Zone, Tangwei Community, Fuhai Street, Bao'an District, Shenzhen 518103, China Tel: +86-755-29609320(8062) Fax: +86-755-25723423
E-mail: godox@godox.com

