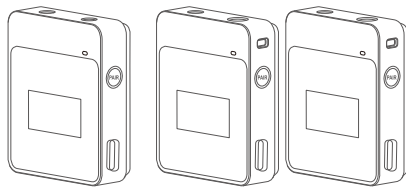


合格证
QC PASS

Godox



Wechat
Official Account
神牛微信公众号



深圳市神牛摄影器材有限公司

地址: 深圳市宝安区福海街道塘尾社区耀川工业区厂房2栋
电话: 0755-29609320(8062) 传真: 0755-25723423
邮箱: godox@godox.com

GODOX Photo Equipment Co.,Ltd.

Add: Building 2, Yaochuan Industrial Zone, Tangwei Community,
Fuhai Street, Bao'an District, Shenzhen 518103, China
Tel: +86-755-29609320(8062) Fax: +86-755-25723423
Email: godox@godox.com

www.godox.com

Made in China | 705-MLM200-02

UK
CA

FC

CE



MoveLink

MoveLink 2.4GHz 无线麦克风系统

MoveLink 2.4GHz wireless microphone system

使用手册

Instruction Manual

前言

欢迎使用神牛2.4GHz数字无线麦克风系统MoveLink，利用2.4G波段来传输的音频产品，本产品适用于直播、采访、授课、短视频拍摄等场景，请仔细阅读本说明书，以便能正确的操作，发挥本产品的优越性能。

产品特点

- ① 系统使用的是全球通用频段2.4GHz 无线技术，采用跳频技术可避免同频干扰、可跟WIFI、蓝牙同时使用(在大量WIFI节点存在的场合会受影响)；
- ② 无损音质，清晰稳定；
- ③ 无线距离最大可达50米；
- ④ TFT显示屏提供各项参数形象显示；
- ⑤ 3.5mm耳机实时监听；
- ⑥ 输出音量控制，提供静音功能；
- ⑦ 发射/接收匹配稳定；
- ⑧ 支持两路发射一路接收；
- ⑨ 单声道/立体声切换模式，轻松做到多输出选择；
- ⑩ 两种充电方式，内置锂电池可通过USB Type-C 接口直充，或放入内置三个充电座的MoveLink触点式充电盒，充电盒连接电源进行充电。

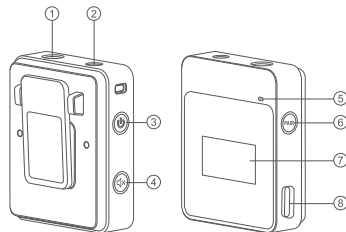
警告

- ⚠ 请勿私自拆卸产品，如产品出现故障须由本公司或授权的维修人员进行检查维修。
- ⚠ 请保持干燥：请勿用湿手接触产品，亦不可将产品浸入水中或暴露于雨中。
- ⚠ 请勿让儿童接触本产品。
- ⚠ 请勿在易燃易爆环境中使用。在这些场合下，请注意相关警告标识。
- ⚠ 请勿放置在超过40度的高温环境中。
- ⚠ 若发生任何故障，请立即关闭电源。

部件名称

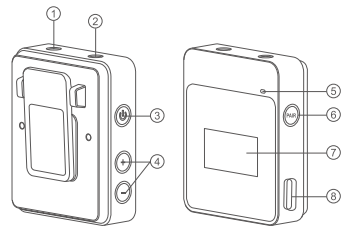
MoveLink TX (发射器)

1. 内置麦克风
2. 3.5mm 音频接口
3. 开 / 关机键
4. 静音键
5. 工作指示灯
6. 配对键
7. TFT 显示屏
8. USB Type-C 接口



MoveLink RX (接收器)

1. 3.5mm 音频同步监听接口
2. 3.5mm TRS 音频输出接口
3. 开关机 / 切换音量设置键
4. 声音 +/-
5. 工作指示灯
6. 配对键
7. TFT 显示屏
8. USB Type-C 接口

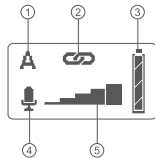


功能与使用方法

MoveLink TX (发射器)

1. 屏幕显示

- ① 连接通道 A 表示连接 A 通道
- ② 连接状态下图为已连接
- ③ 电池电量
- ④ 录音与静音图标此图为录音状态
- ⑤ 音浪指示



2. 功能介绍

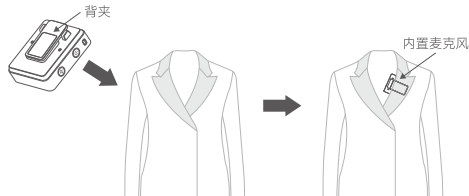
- ⏻ 开机机：长按电源开关即可开/关机；开机状态下如有接入电源的USB Type-C数据线插入，长按电源键进入待机状态，待机状态显示充电动画；待机状态下长按电源键可开机。
- 🔇 短按静音键可开关静音。
- 🔗 长按配对键可配对接收器，配对成功灯为蓝色。
- 🔌 将接入电源的USB Type-C数据线插入发射器的USB Type-C接口即可充电。充电时，会显示充电动画。
(注：因长时间不使用或其他情况无法开机时，先将机器放入充电盒内或通过Type-C接口充电，确定机器有电后取出，然后长按电源键10秒，即可实现复位功能。)

3. 安装方法

使用内置麦克风：

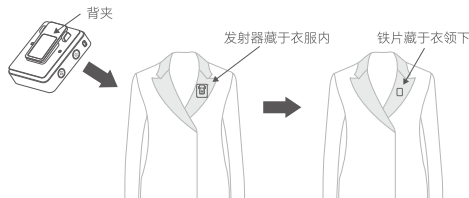
背夹安装方法

把发射器通过背夹安装到衣领上，使内置麦克风指向音源方向。
在使用过程中为了更好的隐蔽性，建议将背夹朝外固定使用。



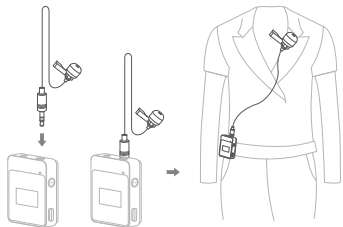
磁吸片安装方法

MoveLink 发射器和接收器的背夹均含磁铁，具有磁力，可以吸附在光滑的金属铁表面。标配铁片可以强力吸附背夹，让发射器或接收器隐秘藏于衣服内。一手拿发射器，背夹朝外放入衣服内，另一只手将铁片覆盖在衣服上面吸附背夹，背夹被强力吸住后，可松手使用。注意，单层衣服可强力吸附，加厚、超厚或多层衣服，吸附能力减弱，会出现吸附不住的情况，这种情况下，请勿使用此安装方法。



使用外置麦克风:

把3.5mm领夹式麦克风插入发射器的3.5mm音频接口并扣紧;把发射器通过背夹夹到腰带上,再把另一头的领夹麦克风夹到衣领上。当使用外置麦克风时,内置麦克风会自动关闭。

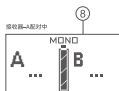
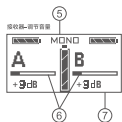
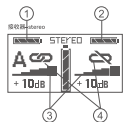


MoveLink RX (接收器)

1. 屏幕显示

- ① A 通道发射器电量
- ② B 通道发射器电量
- ③ A/B 通道音浪动态显示
- ④ 显示 A/B 通道断开与连接

- ⑤ 声道选择显示
- ⑥ A/B 通道音量调节显示
- ⑦ 音量调节界面
- ⑧ 配对界面



2. 功能介绍




A. 开关机: 长按电源开关即可开 / 关机; 开机状态下如有接入电源的 USB Type-C 数据线插入, 长按电源键进入待机状态, 待机状态显示充电动画; 待机状态下长按电源键可开机。



B. 音量调节:

(1) 双通道音量设定模式时, 短按“声音 +/-”按键实现 A/B 发射器音量同时增加 / 减少功能; 长按“声音 +/-”按键实现 A/B 发射器音量同时持续增加 / 减少功能;

(2) 如需切换为单通道调节, 短按电源开关  可切换单独调节“A 通道”/“B 通道”音量, 显示屏闪烁数字的通道为可调节音量通道, 5 秒无操作切换为双通道调节。单通道音量调节同上文 (1) 一样, 短按“声音 +/-”按键可实现单点增减, 长按“声音 +/-”按键可实现持续增减。

(3) 音量调节为 16 档: $-5\text{dB} \sim 10\text{dB}$ 。



C. 长按配对键可配对发射器信号, 左声道自动接收 A 发射器的信号, 右声道自动接收 B 发射器的信号, 短按实现独立声道和立体声切换。



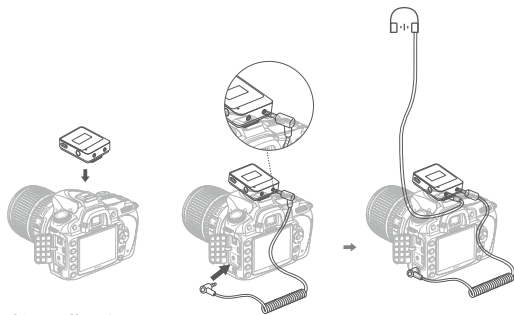
D. 将接入电源的 USB Type-C 数据线插入接收器的 USB Type-C 接口即可充电。充电时, 会显示充电动画。

(注: 因长时间不使用或其他情况无法开机时, 先将机器放入充电盒内或通过 Type-C 接口充电, 确定机器有电后取出, 然后长按电源键 10 秒, 即可实现复位功能。)

3. 安装方法

搭配相机使用安装方法:

把接收器通过背夹夹到相机的热靴座固定, 通过 3.5mm TRS-TRS 音频连接线连接接收器和相机。把耳机插入耳机监听插孔进行监听。



接口及指示灯

1. 接口:

发射器 LINE IN: 音频信号输入 

接收器 LINE OUT: 音频信号输出 

接收器音频同步接收口: 监听接口连接耳机线 

2. 指示灯:

工作指示灯: 常亮绿色时为产品在开机状态下正常工作。

(1) 发射器:

待机状态时, 指示灯熄灭;

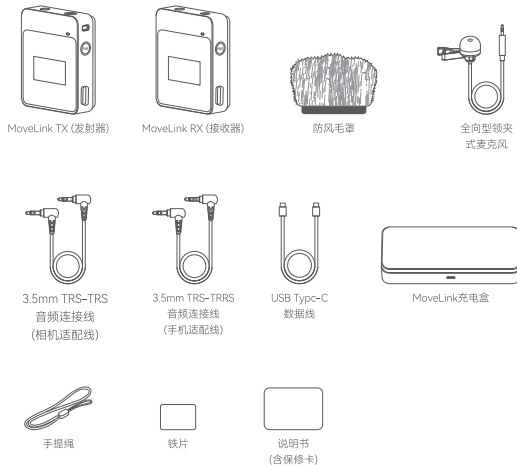
开机状态时, 无连接橙黄色常亮; 连接通道时蓝色常亮;
正在配对时, 红灯循环快闪两次。

(2) 接收器:

待机状态时, 指示灯熄灭;

开机状态时, 无连接橙黄色常亮; 连接通道时蓝色常亮;
正在配对时, 红灯循环快闪两次。

包装清单



名称	型号	标配物品
MoveLink 发射器	MoveLink TX	MoveLink TX (发射器)×1 防风毛罩×1 USB Type-C数据线×1 铁片×1
MoveLink 接收器	MoveLink RX	MoveLink RX (接收器)×1 USB Type-C数据线×1 铁片×1
MoveLink M1组合	MoveLink M1	MoveLink TX (发射器)×1 MoveLink RX (接收器)×1 防风毛罩×1 1.2m全向型领夹麦克风×1 3.5mmTRS-TRS音频连接线(相机适配线)×1 3.5mmTRS-TRRS音频连接线(手机适配线)×1 USB Type-C数据线×2 铁片×2
MoveLink M2组合	MoveLink M2	MoveLink TX (发射器)×2 MoveLink RX (接收器)×1 防风毛罩×2 1.2m全向型领夹麦克风×2 3.5mmTRS-TRS音频连接线(相机适配线)×1 3.5mmTRS-TRRS音频连接线(手机适配线)×1 USB Type-C数据线×3 MoveLink充电盒×1 手提绳×1 铁片×3

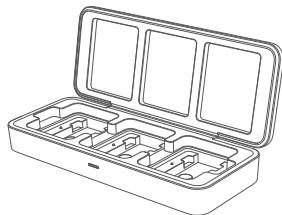
注意：所有型号包装清单均包含产品说明书(含保修卡)。

可选配物品

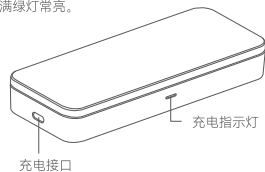
1. MoveLink 充电盒 ML-C3(标配 USB Type-C 数据线 ×1、手提绳 ×1)

MoveLink 充电盒内置三个充电座，接入电源后，可同时为 MoveLink 系统的发射器 / 接收器触点式充电。

注：MoveLink M1 套装不标配充电盒，MoveLink M2 套装标配充电盒。



MoveLink 充电盒充电示意图：
充电过程黄灯常亮，充满绿灯常亮。



MoveLink 系统有两种充电方式：A. 可通过 USB Type-C 接口直充；
B. 也可放 MoveLink 充电盒触点式充电。

规格参数

名称	MoveLink RX (接收器)	MoveLink TX (发射器)
模拟输出	3.5mmTRS	
灵敏度		-32dB+/-2dB
最大SPL		120dB
模拟输入		3.5mmTRS领夹式麦克风输入
频率范围	50Hz-20KHz	
信噪比	70dB或更高	
固定方式	背夹插口 (可安装相机闪光灯热靴里)	
显示屏	TFT显示屏	
动态范围	100dBA (麦克风前置放大器)	
工作范围	50米 (无遮挡条件下)	
供电方式	内置锂电池	
工作时间	约5小时 (视不同环境, 发射机和接收机会有一定差异)	
电池容量	300mAh	
传输类型	2.4GHz数字跳频系统	
拾音模式	全向型	
工作环境温度	-10~50°C	
整机尺寸	长50mm × 宽40mm × 厚14mm	
整机重量	27g	

名称	MoveLink充电盒ML-C3
材质	ABS材质
适用机型	MoveLink TX、MoveLink RX
充电输入	USB Type-C
尺寸	长163mm × 宽66mm × 厚28mm
重量	129g

故障排除

如不能接收到音频信号, 请检查电池是否正确安装以及是否打开发射器电源; 发射器和接收器是否设置在同一组别和频道; 麦克风及耳机是否已正确牢固连接到位; 功能模式是否设置正确。

检查发射器是否设置的静音。

如您的发射器受到他人干扰, 改变发射器和接收器的频道设置即可。

如您发现发射音频距离有限或者有漏发现象, 请检查是否电池耗尽, 请尝试更换电池。

维护保养

避免跌落: 如果受到强烈碰撞或振动, 发射器和接收器可能会发生故障。

保持干燥: 本产品是非防水产品, 如果将其浸入水中或放置于高湿度的环境中将可能发生故障。内部构造生锈可能会导致无法修理的损害。

避免温度骤变: 温度的突变, 诸如在寒冷天进出温暖的大楼将可能会使发射器和接收器内部结露。为避免结露, 请将设备事先装入手提袋或塑料包内, 以防温度突变。

远离强磁场: 无线电广播发射机等设备产生的强静电或强磁场可能会干扰本产品正常工作。

Forward

Thank you for purchasing Godox MoveLink 2.4GHz wireless microphone system. These products are suitable for video recording, journalistic shooting, audio recording, etc. Please read this manual carefully before using to make sure the correct operation and exert the optimum function.

Features

- ① Adopt globally accepted 2.4GHz wireless and frequency-hopping technology to avoid same frequency disturbance, which can be used in WIFI and Bluetooth simultaneously (may be influenced in occasions with multiple WIFI nodes)
- ② Clear, stable and lossless sound quality
- ③ The maximum wireless distance up to 50m
- ④ With TFT display to show the parameters setting
- ⑤ Support 3.5mm Earphone real-time monitoring
- ⑥ With output volume control and silence function
- ⑦ Stable match of transmitting and receiving
- ⑧ Supports two-way transmitting and one-way receiving
- ⑨ Freely switch mono or stereo channel to offer more output options
- ⑩ Two lithium battery charging methods through USB port or MoveLink charging case connected to power supply.

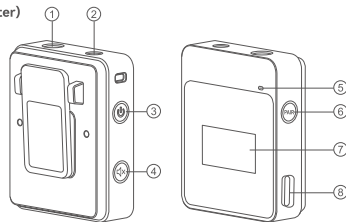
Warning

- ⚠ Do not disassemble. Should repairs become necessary, this product must be sent to an authorized maintenance center.
- ⚠ Always keep this product dry. Do not use in rain or in damp conditions.
- ⚠ Keep out of reach of children.
- ⚠ Do not use the device in the presence of flammable gas. In certain circumstance, please pay attention to the relevant warnings.
- ⚠ Do not leave or store the product if the ambient temperature reads over 40°C.
- ⚠ Turn off the devices immediately in the event of malfunction.

Names of Parts

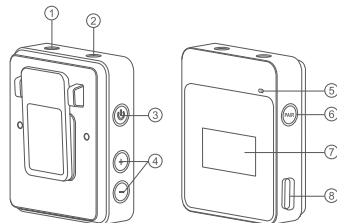
MoveLink TX (Transmitter)

1. Built-in Microphone
2. 3.5mm Audio Port
3. Power Switch Button
4. Mute Button
5. Working Indicator
6. Pairing Button
7. TFT Display
8. USB Type-C Port



MoveLink RX (Receiver)

1. 3.5mm Audio Sync Monitoring Port
2. 3.5mm TRS Audio Output Port
3. Power Switch/Switch Volume Setting Button
4. Sound +/-
5. Pairing Button
6. Working Indicator
7. TFT Display
8. USB Type-C Port



Functions and Operation

MoveLink TX (Transmitter)

1. Display

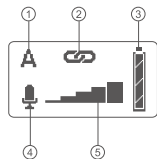
Icon 1: Connecting channel. A means connecting to A channel.

Icon 2: Connecting state. The icon on the picture means connected state.

Icon 3: Battery level.

Icon 4: Recording and silent icon. The icon on the picture means recording state.


Icon 5: Soundbyte indication.



2. Function Introduction

 Power switch: long press the power switch to power on or off. In the state of power-on, if there is USB Type-C Cable inserted, long press the power switch to enter standby state and the charging animation will be displayed. In standby state, long press the power switch to power on.

 Short press the TX mute button to switch on or off silent mode.

 Long press the pairing button to match the receiver. The indicator will light blue when successfully matched.

 Charge the products through USB Type-C port directly. The charging animation will be displayed in charging.

(Note: If the transmitter cannot be turned on due to long-term idle use or other reasons, put it into the charging case or connect to power source via Type-C port, take out after the device has been charged, then press and hold the power switch button for 10 seconds to reset.)

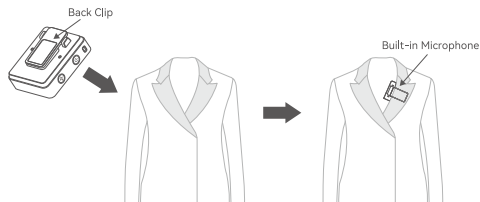
3. Installation Method

Using built-in microphone:

Through the back clip

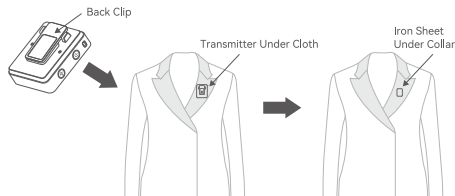
Install the transmitter on the collar through the back clip, aiming the built-in microphone towards the sound source direction.

For achieving better invisibility during the usage, it is recommended to fix the back clip towards the outside.



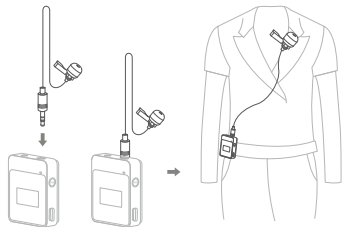
Through the magnetic mount

Back clip of MoveLink transmitter and receiver with magnetic which can be mount on smooth metal iron surface. The including iron sheet can strongly adsorb the back clip, allowing the transmitter or receiver to be hidden in the clothes. Hold the transmitter in one hand with the back clip facing out and put it into the clothes. With the other hand, cover the iron sheet on the clothes to absorb the back clip. After the back clip is strongly sucked, you can let them go. Note that single-layer clothes can be strongly adsorbed. Thicker, ultra-thick or multilayer clothes will have weak adsorption capacity and will not be able to adsorb. In this case, please do not use this installation method.



Using External Microphone:

Insert the 3.5mm lavalier microphone into the transmitter's 3.5mm audio port and lock it tightly. Clip the transmitter onto the belt by back clip and clip the lavalier microphone on the other end onto the collar. When using the external microphone, the built-in microphone will be automatically turned off.



MoveLink RX (Receiver)

1. Screen Display

Icon 1: A channel transmitter's battery level

Icon 2: B channel transmitter's battery level

Icon 3: A/B channel's soundbyte dynamic display

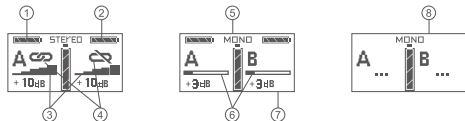
Icon 4: Connection or disconnection of A/B channel

Icon 5: Sound channel selection display

Icon 6: A/B channel's volume adjustment display

Icon 7: Sound volume adjustment interface

Icon 8: Pairing interface



2. Function Introduction



A. Power Switch:

long press the power switch to power on or off. In the state of power-on, if there is USB Type-C inserted, long press the power switch to enter standby state and the charging animation will be displayed. In standby state, long press the power switch to power on.



B. Volume Adjustment:

(1) In dual sound setting mode, short press the "sound +/-" button once to increase or decrease the A/B transmitter's sound volume simultaneously by 1 unit; long press the "sound +/-" button to increase or decrease the A/B transmitter's sound volume gradually.

(2) Switch to mono channel sound setting: Short press the power switch button to separately adjust the volume of "A channel" and "B channel". The channel with blinking figures can be adjusted volumes and will be switched to dual channel adjustment if there are no operations after 5 seconds. Mono channel sound adjustment is same as (1) above, short press the "sound +/-" once to increase or decrease the volume by 1 unit, long press the "sound +/-" to increase or decrease the volume gradually.

(3) There are 16 levels of volume adjustment: -5dB-10dB.



C. Long press the pairing button to match the singles of transmitters. The left channel will automatically receive A transmitter's singles while the right channel will receive B transmitter's. Short press the pairing button to select mono channel and stereo channel.

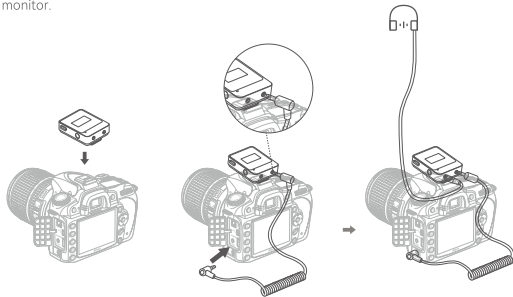


D. Charge the products through USB Type-C port directly. The charging animation will be displayed in charging.

(Note: If the receiver cannot be turned on due to long-term idle use or other reasons, put it into the charging case or connect to power source via Type-C port, take out after the device has been charged, then press and hold the power switch button for 10 seconds to reset.)

3. Installation Method

Install the receiver onto the camera's hotshoe and fix it through the back clip. And connect the receiver with the camera by 3.5mm TRS-TRS audio connect cable. Then, insert your earphone plug into the 3.5mm Audio Sync Monitoring Port to monitor.




Port and Indicator

1. Ports:

Transmitter LINE IN: audio singles input 

Receiver LINE Out: audio singles output 

Receiver Audio Sync Monitoring Port: insert the earphone plug into monitoring port 

2. Indicator:

Working indicator: the indicator will display green in normal working state.

(1) Transmitter

In standby state, the indicator will be off.

In boot-up state, the indicator will be orange in non-connection, be blue in connection.

During the pairing, the indicator will blink in red for two times circularly.

(2) Receiver

In standby state, the indicator will be off.

In boot-up state, the indicator will be orange in non-connection, be blue in connection.

During the pairing, the indicator will blink in red for two times circularly.

What's in the Box



MoveLink TX
(Transmitter)



MoveLink RX
(Receiver)



Wind Cap



Omnidirectional
Lavalier
Microphone



3.5mm TRS-TRS
Audio Connect Cable
(For Camera)



3.5mm TRS-TRS
Audio Connect Cable
(For Smartphone)



USB Type-C
Cable



MoveLink Charging Case



Wrist Strap



Iron Sheet



Instruction Manual
(Including Warranty)

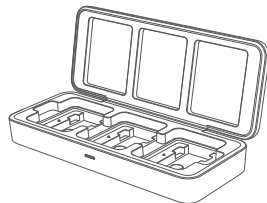
Name	Model	Included Items
MoveLink Transmitter	MoveLink TX	MoveLink TX (Transmitter) ×1 Wind Cap ×1 USB Type-C Cable ×1 Iron Sheet ×1
MoveLink Receiver	MoveLink RX	MoveLink RX (Receiver) ×1 USB Type-C Cable ×1 Iron Sheet ×1
MoveLink M1	MoveLink M1	MoveLink TX (Transmitter) ×1 MoveLink RX (Receiver) ×1 Wind Cap ×1 1.2m Omnidirectional Lavalier Microphone ×1 3.5mmTRS-TRS Audio Connect Cable (for camera) ×1 3.5mmTRS-TRRS Audio Connect Cable (for phone) ×1 USB Type-C Cable ×2 Iron Sheet ×2
MoveLink M2	MoveLink M2	MoveLink TX (Transmitter) ×2 MoveLink RX (Receiver) ×1 Wind Cap ×2 1.2m Omnidirectional Lavalier Microphone ×2 3.5mmTRS-TRS Audio Connect Cable (for camera) ×1 3.5mmTRS-TRRS Audio Connect Cable (for phone) ×1 USB Type-C Cable ×3 MoveLink Charging Case ×1 Wrist Strap ×1 Iron Sheet ×3

Note: Packing lists of all models also include the instruction manual (with warranty).

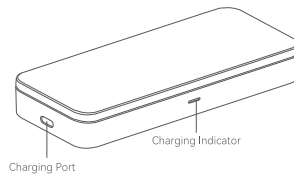
Optional Accessory

1. MoveLink Charging Case ML-C3(Inclube USB Type-C Cable and a Wrist Strap)
There are three charging bases in MoveLink, which can charge three transmitters or receivers of MoveLink system after being connected to power supply.

Note: MoveLink M1 do not include MoveLink Charging Case while MoveLink M2 includes a MoveLink Charging Case.



MoveLink Charging Case Schematic Diagram of Charging:
The indicator will display yellow during the charging process and turn to green when being fully charged.



MoveLink system has two charging ways:
A. being charged from USB Type-C cable;
B. being charged through MoveLink Charging Case.

Technique Data

Name	MoveLink RX (Receiver)	MoveLink TX (Transmitter)
Simulated Output	3.5mmTRS	
Sensitivity		-32dB+/-2dB
Max. SPL		120dB
Simulated Input		3.5mmTRS Lavalier microphone input
Frequency Range	50Hz-20KHz	
Signal to Noise Ratio	70dB or higher	
Fixing Method	Back clip (installed onto camera's hotshoe)	
Display	TFT Display	
Dynamic Range	100dBA (microphone preamplifier)	
Working Range	50m (in no shelter situation)	
Power Supply	Built-in lithium battery	
Working Time	Approx. 5H (the working time of TX and RX will vary depending on different environment)	
Battery Capacity	300mAh	
Transmission Type	2.4GHz Frequency hopping system	
Sound Pick-up Mode	Omnidirectional	
Working Environment Temperature	-10~50°C	
Dimension	Length 50mm × width 40mm × thickness14mm	
Weight	27g	

Name	MoveLink Charging Case ML-C3
Material	ABS Material
Suitable Models	MoveLink TX, MoveLink RX
Charging Input	USB Type-C
Dimension	Length 163mm × Width 66mm × Thickness 28mm
Weight	129g

Troubleshooting

Unable to receive audio signal. Make sure batteries are installed correctly and Power Switch is turned on. Check if the transmitter and the receiver are set to the same channel, if the microphone or earphone is well connected, or if the devices are set to the correct mode.

Check if the transmitter is set to mute mode or not.

Signal disturbance or shooting interference. Change a different channel of the transmitter and receiver.

Operation audio distance limited or signal missing. Check if batteries are exhausted. If so, replace them.

Maintenance

Avoid sudden drops. The device may fail to work after strong shocks, impacts, or excess stress.

Keep dry. The product isn't water-proof. Malfunction, rust, and corrosion may occur and go beyond repair if soaked in water or exposed to high humidity.

Avoid sudden temperature changes. Condensation happens if sudden temperature changes such as the circumstance when taking the product out of a building with higher temperature to outside in winter. Please put the product in a handbag or plastic bag beforehand.

Keep away from strong magnetic field. The strong static or magnetic field produced by devices such as radio transmitters leads to malfunction.

Changes made to the specifications or designs may not be reflected in this manual.

FCC Caution

This device complies with part 15 of the FCC Rules. Operation is subject to the following two conditions:

- (1) This device may not cause harmful interference, and
- (2) this device must accept any interference received, including interference that may cause undesired operation.

Any Changes or modifications not expressly approved by the party responsible for compliance could void the user's authority to operate the equipment.

Note: This equipment has been tested and found to comply with the limits for a Class B digital device, pursuant to part 15 of the FCC Rules. These limits are designed to provide reasonable protection against harmful interference in a residential installation. This equipment generates uses and can radiate radio frequency energy and, if not installed and used in accordance with the instructions, may cause harmful interference to radio communications. However, there is no guarantee that interference will not occur in a particular installation. If this equipment does cause harmful interference to radio or television reception, which can be determined by turning the equipment off and on, the user is encouraged to try to correct the interference by one or more of the following measures:

- Reorient or relocate the receiving antenna.
- Increase the separation between the equipment and receiver.
- Connect the equipment into an outlet on a circuit different from that to which the receiver is connected.

Consult the dealer or an experienced radio/TV technician for help.

The device has been evaluated to meet general RF exposure requirement. The device can be used in portable exposure condition without restriction.

Warning

Operating frequency:2404MHz – 2472MHz

Maximum EIRP Power: 7.67dBm

Declaration of Conformity

GODOX Photo Equipment Co.,Ltd. hereby declares that this equipment are in compliance with the essential requirements and other relevant provisions of Directive 2014/53/EU. In accordance with Article 10(2) and Article 10(10), this product is allowed to be used in all EU member states.For more information of DoC, Please click this web link:

https://www.godox.com/DOC/Godox_MoveLink_DOC.pdf

The device complies with RF specifications when the device used at 0mm from your body.

产品保修

尊敬的用户，本保修卡是申请保修服务的重要凭证，请您配合销售商填写并妥善保管，谢谢！

产品信息	型号	产品条码
用户信息	姓名	联系电话
	通信地址	
销售商信息	名称	
	联系电话	
	通信地址	
	销售日期	
备注		

注：此表应由销售商盖章确认。

产品信息

本文件适用于相关《产品保修信息》(见后面说明)所列产品，其他非属此范围的产品或部件(如促销品、赠品及其他出厂后附加的部件等)不在此保修承诺内。

保修期

产品及部件的相应保修期按相关的《产品保修信息》执行。保修期自产品首次购买日起算，购买日以购买产品时保修卡登记日期为准。

如何获得保修服务

要保修服务，您可直接与销售商或授权服务机构联系，也可拨打神牛产品售后服务电话，与我们联系，由我们的服务人员为您安排服务。申请保修时，您应提供有效的保修卡作为保修凭证，方可获得保修。如您不能提供有效的保修卡，则在我们可确认产品或部件属于保修范围的情况下，也可以为您提供保修，但这不作为我们的义务。

不适用保修的情况

如产品存在下列情况，本文件项下的保证和服务将不适用 ① 产品或部件超过相应保修期；② 错误或不当使用、维护或保管导致的故障或损坏，如：不当搬运；非按产品合理预期用途使用；不当插拔外接设备；跌落或外力挤压；接触或暴露于不适当温度、溶剂、酸碱、水浸或潮湿环境；③ 由非神牛授权机构或人员安装、修理、更改、添加或拆卸造成的故障或损坏；④ 产品或部件原有识别信息被修改变更或除去；⑤ 无有效保修卡；⑥ 使用非法授权、非标准或非公开发行的软件造成的故障或损坏；⑦ 因不可抗力或意外事件造成的故障或损坏；⑧ 其他非因产品本身质量问题导致的故障或损坏。遇上述情况，您应向相关责任方寻求解决，神牛对此不承担任何责任。因非在保修期或保修范围内的部件、附件或软件导致产品不能正常使用的，不是保修范围内的故障。产品使用过程中正常的脱色、磨损和消耗，不是保修范围内的故障。

产品保修和服务支持信息

产品的保修期和服务类型按以下《产品保修信息》执行：

产品类别	选件名称	保修期(月)	保修服务类型
部件	电路板	12	客户送修
	电池	3	客户送修
	充电器等带电性能的部件	12	客户送修
其他	如电池盒、防风棉、防风毛罩、锁紧装置、手提绳、扎带、魔术贴、领夹、便携袋、包装等	无	无保修

神牛产品售后服务电话 0755-29609320-8062

Warranty

Dear customers, as this warranty card is an important certificate to apply for our maintenance service, please fill in the following form in coordination with the seller and safe-keep it. Thank you!

Product Information	Model	Product Code Number
Customer Information	Name	Contact Number
	Address	
Seller Information	Name	
	Contact Number	
	Address	
	Date of Sale	
Note		

Note: This form shall be sealed by the seller.

Applicable Products

The document applies to the products listed on the Product Maintenance Information (see below for further information). Other products or accessories (e.g. promotional items, giveaways and additional accessories attached, etc.) are not included in this warranty scope.

Warranty Period

The warranty period of products and accessories is implemented according to the relevant Product Maintenance Information. The warranty period is calculated from the day (purchase date) when the product is bought for the first time, and the purchase date is considered as the date registered on the warranty card when buying the product.

How to Get the Maintenance Service

If maintenance service is needed, you can directly contact the product distributor or authorized service institutions. You can also contact the Godox after-sale service call and we will offer you service. When applying for maintenance service, you should provide valid warranty card. If you cannot provide valid warranty card, we may offer you maintenance service once confirmed that the product or accessory is

involved in the maintenance scope, but that shall not be considered as our obligation.

Inapplicable Cases

The guarantee and service offered by this document are not applicable in the following cases: ①. The product or accessory has expired its warranty period; ②. Breakage or damage caused by inappropriate usage, maintenance or preservation, such as improper packing, improper usage, improper plugging in/out external equipment, falling off or squeezing by external force, contacting or exposing to the improper temperature, solvent, acid, base, flooding and damp environments, etc; ③. Breakage or damage caused by non-authorized institution or staff in the process of installation, maintenance, alternation, addition and detachment; ④. The original identifying information of product or accessory is modified, alternated, or removed; ⑤. No valid warranty card; ⑥. Breakage or damage caused by using illegally authorized, nonstandard or non-public released software; ⑦. Breakage or damage caused by force majeure or accident; ⑧. Breakage or damage that could not be attributed to the product itself. Once met these situations above, you should seek solutions from the related responsible parties and Godox assumes no responsibility. The damage caused by parts, accessories and software that beyond the warranty period or scope is not included in our maintenance scope. The normal discoloration, abrasion and consumption are not the breakage within the maintenance scope.

Maintenance and Service Support Information

The warranty period and service types of products are implemented according to the following Product Maintenance Information:

Product Type	Name	Maintenance Period(month)	Warranty Service Type
Parts	Product Main Body	12	Customer sends the product to designated site
	Battery	3	Customer sends the product to designated site
	Charger, Electrical Parts etc.	12	Customer sends the product to designated site
Other Items	Battery Case, Windscreen Foam, Wind Cap, Locking Device, Lanyard, Tie, Velcro Tape, Clip, Bag, Package etc.	No	Without warranty

Godox After-sale Service Call 0755-29609320-8062