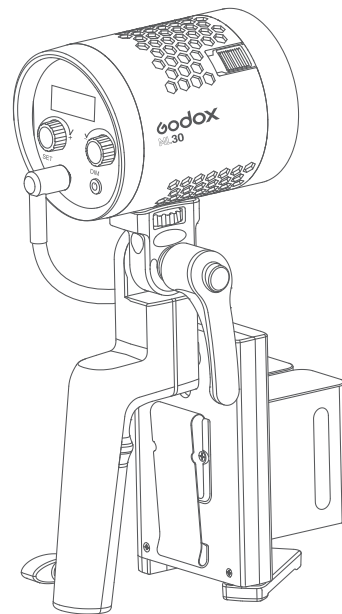


# Godox

## 便携LED摄影灯 PORTABLE LED VIDEO LIGHT ML30

合格证  
QC PASS



### 深圳市神牛摄影器材有限公司

地址: 深圳市宝安区福海街道塘尾社区耀川工业区厂房2栋  
电话: 0755-29609320(8062) 传真: 0755-25723423 邮箱: godox@godox.com

### GODOX Photo Equipment Co., Ltd.

Add: Building 2, Yaochuan Industrial Zone, Tangwei Community, Fuhai Street, Bao'an District, Shenzhen, 518103 China Tel: +86-755-29609320(8062)  
Fax: +86-755-25723423 E-mail: godox@godox.com

godox.com

Made in China



RoHS



说明手册  
Instruction Manual

## 前言

ML30是一款操作灵活便捷、体积小易携带的补光LED灯。它性能强大、蓝牙无线调控、高亮度、高显指、输出光源稳定，创造自然光效，精确还原物体色彩。沿用了神牛卡口，能够与现有的神牛卡口灯光附件通用，拓展更多的可能。该灯适用于直播、短视频、静物拍摄、户外拍摄等场景。

## 产品有以下亮点：

- 灯体小巧轻便，专设两种供电方式，契合户外拍摄需求
- 一灯多用，随心切换LED常亮模式和12种情景光效模式
- 0%~100%精确调节亮度
- 体积轻巧，方便手持，自由布光
- 配置静音模式，创作零噪音无干扰
- 蓝牙无线遥控，操作轻松便捷

## 警告

保持干燥；请勿用湿手接触产品，请勿将产品浸入水中或暴露于雨中。  
请勿私自拆卸产品，如产品出现故障须由本公司或授权的维修人员进行检查维修。

请勿让儿童接触本产品。

本产品没有防水功能，在雨天及潮湿环境下请注意防水。

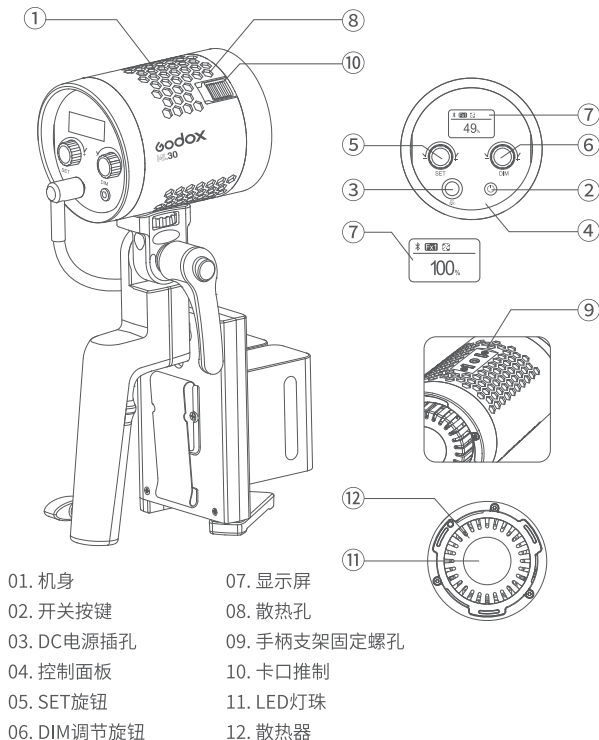
请勿在化学品、可燃性气体或其他特殊物质附近使用摄影灯。在这些场合下，请注意相关警告标识。

请使用专用的充电器进行充电，并且按正确的操作说明，在规定的电压、温度范围内使用。

使用时，务必将灯头保护罩取出，否则灯头发生损坏。不使用时，套上灯头保护罩，以达保护灯头效果。

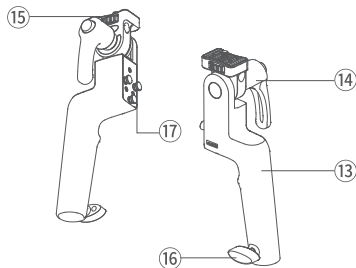
## 部件名称

### 灯体



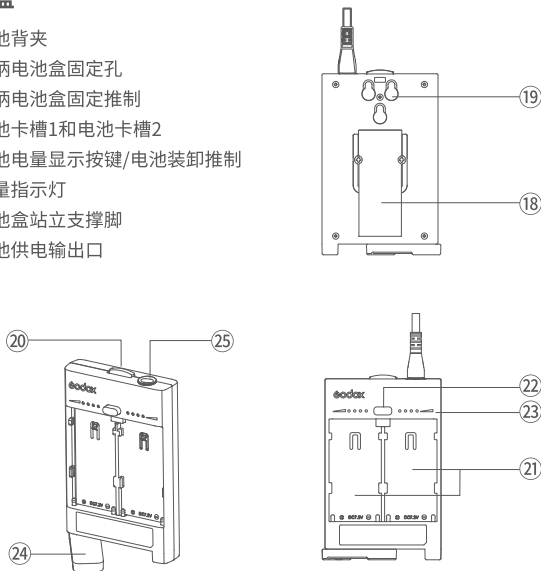
## 手柄

13. 手柄支架
14. 手柄方向调节旋钮
15. 手柄固定灯头旋钮
16. 灯架固定旋钮
17. 手柄电池盒固定扣



## 电池盒

18. 电池背夹
19. 手柄电池盒固定孔
20. 手柄电池盒固定推制
21. 电池卡槽1和电池卡槽2
22. 电池电量显示按键/电池装卸推制
23. 电量指示灯
24. 电池盒站立支撑脚
25. 电池供电输出口



## 标配物品



## ML30双灯套装(另购)



## 选配物品



## 电源管理

适配器供电:输入:AC100-240V/1.3A,输出:14V/3.4A/50-60HZ。

外置电池供电:电池盒上装2个NP-F970,用电源连接线连接电池盒跟灯体即可供电。

电池电量:电量指示灯提示电池电量,四格绿点代表满电,三格绿点代表剩余75%电量,两格绿点代表剩余50%电量,一格绿点代表剩余25%电量,不足一格绿点时,显示屏会显示低电提示。

备注:电池盒只供电池放电,不能给电池充电。使用电池盒供电必须两个电池同时使用,不支持单个电池供电使用。

## 功能使用操作说明

### 1. 开关机

短按开关按键,控制机子的打开和关闭,OLED显示主机当前信息。

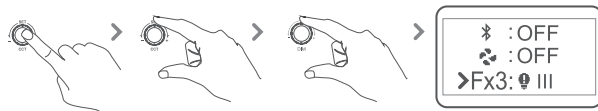


### 2. 模式选择:常亮模式/FX光效模式

按SET旋钮进入菜单,旋转SET旋钮至FX,再旋转DIM调节旋钮切换模式:

常亮模式:FX模式为OFF时即为常亮模式。

光效模式:情景光效模式有4类12种



序号	场景	显示	显示 I	显示 II	显示 III
FX1		闪光灯	闪光	发布会	狗仔队
FX2		雷闪电	间歇	频繁	持续
FX3		坏灯泡	间歇	频繁	持续
FX4		电视机	慢速	中速	快速

ⓘ 小提示:旋转DIM旋钮选择光效类型,然后短按DIM旋钮实现速率切换。

### 3.亮度调节:

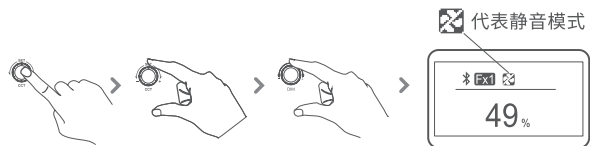
直接在主界面旋转DIM调节旋钮调节亮度,按一次DIM调节旋钮可关闭亮度,再按一次可恢复关闭之前的亮度。



#### 4. 静音模式开启:

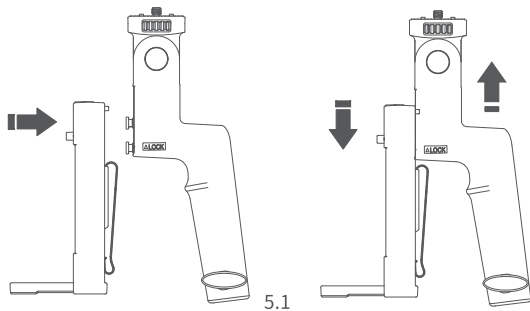
显示屏主界面显示  时为静音模式。

**开启静音模式:**按SET旋钮进入菜单,旋转SET按钮至风扇,旋转DIM调节旋钮打开或关闭风扇,设置为ON时为非静音模式,设置为OFF时为静音模式。静音模式时,亮度可调范围0%~50%。



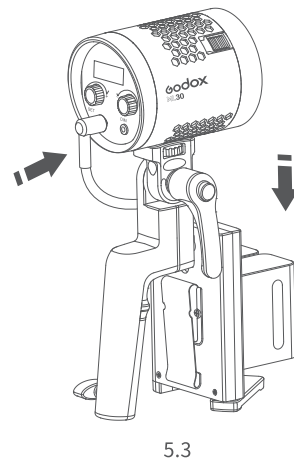
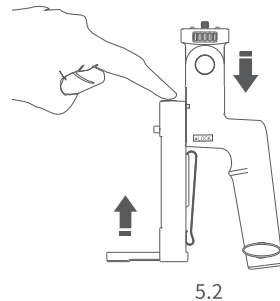
#### 5. 装卸电池盒:

5.1装电池盒:电池盒固定孔卡入手柄电池盒固定扣,卡好后往下拉电池盒,听到咔声表示已装好电池盒。



#### 5.2 拆卸电池盒:

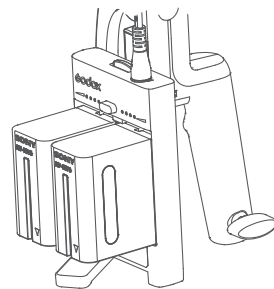
扣住手柄电池盒固定推制往上推电池盒,再往外拿。



#### 5.3 连接电池盒和灯体:

用电源线直头一端插入电池盒,另一端弯头插入灯体DC插座。

5.4电池盒装入2个NP-F970  
电池即可通电。



## 6. 低电提示:

当电量低于一格时,显示屏自动弹出低电量提示符号。

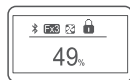


## 7. 锁定功能:

开机状态下,长按SET旋钮2秒,屏幕上方显示锁定符号可进行功能锁定,再长按2秒可解锁。

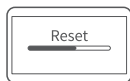


注:灯体在锁定状态下,依然可进行蓝牙远程遥控。



## 8. 蓝牙设置:

8.1短按SET旋钮进入菜单,旋转SET旋钮至蓝牙,旋转DIM调节旋钮选择OFF/蓝牙MAC码/Reset;选择OFF时蓝牙关闭,选择蓝牙MAC码(例如:F9D2)时,蓝牙打开,主界面出现蓝牙符号。选择Reset时,短按DIM调节旋钮即可进行蓝牙重置。



8.2直接扫二维码即可下载“Godox Light”手机APP。(安卓和苹果系统都可以使用)具体操作请参考手机APP“帮助”手册,里面有详情教程。



注:首个移动设备(手机或平板电脑)可直接使用APP操控灯体。更换其他移动设备(手机或平板电脑)时,灯体进行蓝牙重置后,方可正常使用APP连接。

## 9. 高温报警功能

9.1当LED灯珠温度过高时,显示屏会显示高温报警符号。

9.2当LED灯珠温度恢复正常,灯体会自动解除报警,此时可以旋转DIM旋钮改变亮度。

9.3当显示屏出现温度传感器故障符号,即代表该机器高温报警功能失效。

## 产品参数

LED 摄影灯	ML 30
适配器	输出14.0V 3.4A
功率	37.6W
调光范围	0%~100%(系统初始亮度值为100%)
光效模式	4类12种
CRI (≈)	96
TLCI (≈)	97
蓝牙传输距离	≈15m
色温	5600K
工作环境温度	-10~40°C
重量	587g
产品尺寸	120*88*88mm (不含手柄和反光罩)

\* 设计和规格如有变更,恕不另行通知。

## 照度数据

距离	测试参数	0.5m	1m	2m
裸灯	lux	5880	1540	392
	fc	546	143	36.4
ML系列标准罩	lux	45700	8590	1740
	fc	4250	798	161

## 维护保养

- 为了防止灰尘的堆积影响到产品的性能, 请定时用干净的湿布轻轻擦拭产品外部。
- 1年保修, 消耗品电池, 充电器, 充电器电源线等配件不在此保修范围内。
- 对于不规范操作引起的机器故障不在保修范围内。
- 所有维修概由本厂指定的可供原配件的维修部负责。
- 经发现, 擅自检修本品, 将取消一年保修期, 维修需要收取相关费用。
- 如果本品出现故障或者被水淋湿, 在专业人员维修后方可继续使用。
- 如有技术更改, 恕不另行通知。

本设备包含型号核准代码为:CMIIT ID:2020DP13510, 为该产品的无线电发射模块。

## Foreword

Thank you for purchasing this Godox Product!

ML30 LED light,a compact and portable LED light source,with Bluetooth wireless and on-board control, high CRIand TLCI scores to deliver vibrant natural light and reproduce accurate colors, Godox mount to compatible with all Godox-mount modifiers for various lighting possibilities, is suitable for live streaming, short video,product shooting and other scenarios.

## Features:

- Compact and portable, with 2 ways of power supply to meet the needs of outdoor shooting
- Freely switch LED continuous light mode and 12 kinds of preset lighting effects modes
- 0% to 100% Precisely adjust light brightness
- Compact and lightweight, easy to be held in hand
- Quiet design allow it keeping at a negligible noise when working
- Bluetooth wireless remote control, easy and convenient to operate

## Warning

Always keep this product dry. Do not use in rain or in damp conditions.

Do not disassemble. Should repairs become necessary, this product must be sent to an authorized maintenance center.

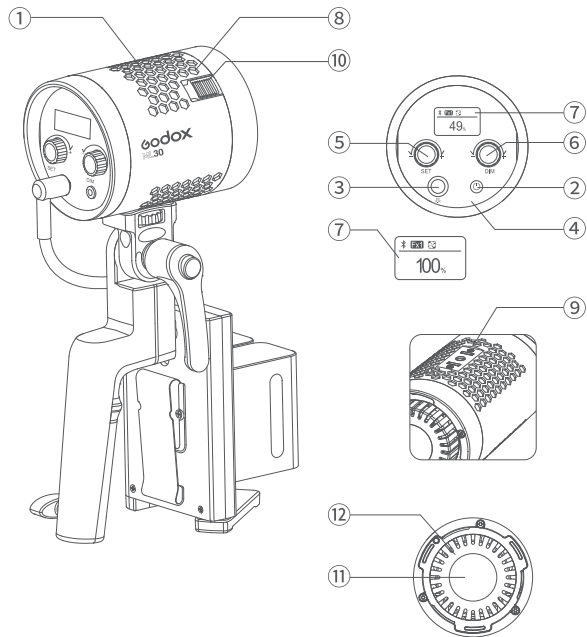
Keep out of reach of children.

As this product do not have waterproof function, please take measures of waterproof in rainy or damp environment.

Do not use the light unit in the presence of flammable gases, chemicals and other similar materials. In certain circumstance, these materials may be sensitive to the strong light emitting from this light unit and fire or electromagnetic interference may result.

Always remove the protection cover prior to turning on the light.Always re-install the cover when packing it away.

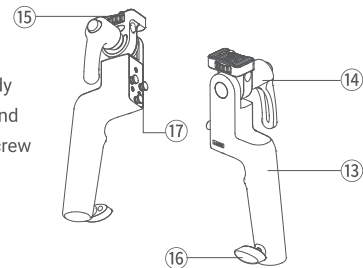
## Parts



- |                     |                           |
|---------------------|---------------------------|
| 01. Body            | 07. Display               |
| 02. Power Switch    | 08. Ventilation Hole      |
| 03. DC Power Socket | 09. Screw Hole for Handle |
| 04. Control Panel   | 10. Accessory Slide Lock  |
| 05. SET Select Dial | 11. LED Light Beads       |
| 06. DIM Select Dial | 12. Radiator              |

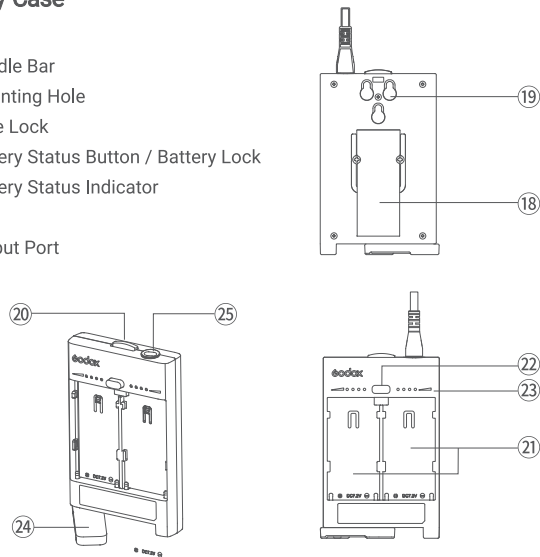
## Handle

- 13. Handle Bar
- 14. Direction Adjusting Knob
- 15. Fixing Screw for Light Body
- 16. Fixing Screw for Light Stand
- 17. Battery Case Mounting Screw



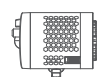
## Battery Case

- 18. Clip
- 19. Handle Bar
- 20. Mounting Hole
- 21. Slide Lock
- 22. Battery Status Button / Battery Lock
- 23. Battery Status Indicator
- 24. Leg
- 25. Output Port





## What's in the Box



Light Body ML30  
\*1



Reflector  
\*1



Handle  
\*1



Protect Cover  
\*1



Battery Case  
BC60 \*1



Adapter  
\*1



5m AC Power  
Cable \*1



1.5m DC Power  
Cable\*1

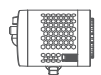


0.2m DC Power  
Cable\*1



Instruction Manual  
\*1

## Two Light Kit for ML30(Buy separately)



Light Body ML30  
\*2



Reflector  
\*2



Protect Cover  
\*2



Handle  
\*1



Tripod Adapter  
ML-TA\*2



Softbox  
ML-SF3030\*2



Collapsible Soft Tent  
ML-CS1625 \*1



Collapsible Diffusion Dome  
ML-CD15\*1



Adapter  
\*2



Adapter Holder  
\*2



Battery Case  
BC60 \*1



0.2m DC Power  
Cable\*1



1.5m DC Power  
Cable\*1



5m AC Power  
Cable\*2



Carry Bag  
\*1



Instruction Manual  
\*1

## Optional Accessory



Telescopic Mounting Rod  
ES-TMR



Collapsible Soft Tent  
ML-CS1625



Collapsible Diffusion Dome  
ML-CD15



Softbox  
ML-SF3030



D-TAP to DC Male Connector Cable  
ML-C1

## Power Management

### Power Supply

Adapter power supply: input: AC100-240V/1.3A, output: 14V/3.4A/50-60HZ.

External battery power supply: install two NP-F970 batteries into the battery compartment. Then, use the power cable to connect the battery case with the light body to achieve power supply.

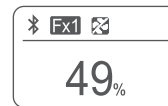
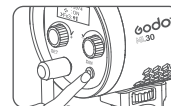
**Battery Power Indicator** The green light indicates the remaining power, the four green lights indicate the remaining 100% power, the three green lights indicate the remaining 75% power, the two bright green lights indicate the remaining 50% power, and the one green light indicates the remaining 25% power. Less than 1 green light, the display will show low power prompt.

The battery case can only offer battery discharging instead of charging. When powered by battery box, two batteries shall be used simultaneously. Please do not use one battery individually.

## Operation

### 1. Power on

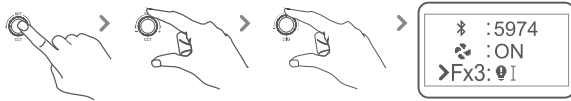
Press the power switch to control the ON/OFF of the light, and the OLED display will show the current information.



## 2. Mode selection: continuous lightingmode/ FX lighting effects Mode

Press SET select dial to enter the menu. Then the SET select dial to FX and turn the DIM select dial to switch the two modes:

Continuous lighting mode: set FX mode to OFF to enter continuous lighting mode.



## FX Lighting Mode: 12 kinds of preset lighting effects in 4 scenes

Number	Display	Scene	Display I	Display II	Display III
FX1		Flash	Flash	Press conference	Paparazzi
FX2		Lightning	Discontinuous	Frequent	Sustainable
FX3		Broken bulb	Discontinuous	Frequent	Sustainable
FX4		TV	Slow speed	Medium speed	Quick speed

! Tips: Turn DIM select dial to select light efficiency type, and then short press DIM select dial to realize speed switching.

## 3. Brightness select dial:

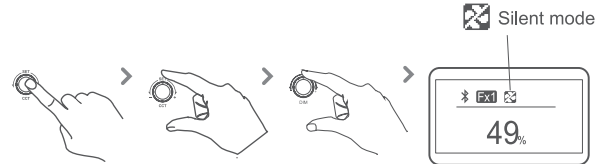
turn the DIM select dial to adjust brightness. Press the DIM select dial once to turn off the brightness. Press the DIM select dial again to recover the former brightness.



## 4. Silent mode:

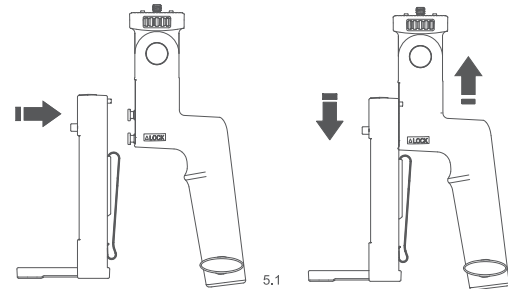
when is displayed, the silent mode is turned on.

Turn on the silent mode: press SET select dial to enter the menu. Then, turn the DIM select dial to turn on or off the silent mode. Set it to on to enter non-silent mode while set it to off to enter silent mode. In silent mode, the brightness adjustment range is from 0% to 50%.

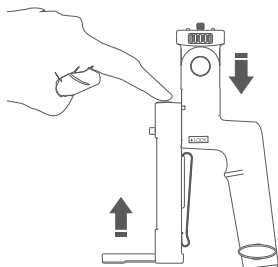


## 5. Install and detach battery case

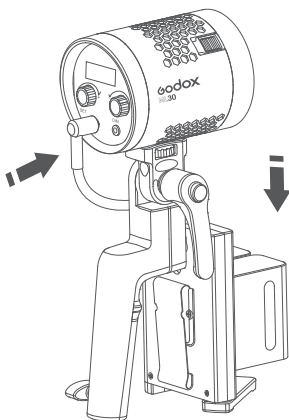
5.1 Install battery case: Aim the handle's mounting screws into the battery case's mounting holes, pull the batter case downwards until being tightened.



5.2 Detach battery case: push the battery case' locking ring and push the battery case upwards to take it out.

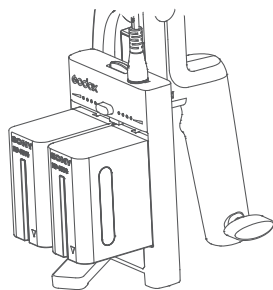


5.2



5.3

5.3 Connect the battery case with light head: insert the one end with clamping buckle of the power cable into the battery case while another end into the DC power socket of the light head.



5.4

5.4 Insert two NP-F970 batteries, and the LED light can be put into usage.

## 6. Low Battery Indication

When the battery power is low, the low battery indicator will pop out.



## 7. Locking Function

In power on state, long press the SET select dial for 2 seconds and the locking icon will appear on the display. Long press the button for 2 seconds again to unlock.



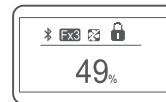
Note: The locking function only works in panel function, Bluetooth control are not affected.

## 8. Bluetooth Settings:

8.1 Short press the SET select dial enter the menu, turn the SET select dial to Bluetooth, and then turn the DIM select dial to select OFF/Bluetooth MAC code /Reset; When OFF is selected, Bluetooth is turned off. When Bluetooth MAC code (e.g.: 5974) is selected, Bluetooth is turned on, and the Bluetooth icon appears on the main interface. When Reset is selected, short press the DIM select dial to perform Bluetooth reset.

8.2 Scan the QR code to download the "Godox Light" mobile app.(It can be used on both Android and Apple systems) (QR code diagram) . For specific operations, please refer to the "Help" manual of the mobile APP, which contains detailed tutorials.

Note: The first mobile device (mobile phone or tablet) can directly use the APP to control the light body. When replacing other mobile device (mobile phone or tablet), the light body can only be connected with the APP normally after the Bluetooth reset.



## 9.High Temperature Alarm Function

9.1When the LED Light bead temperature is too high, the display screen will display the high

temperature alarm symbol .

9.2 When the LED Light temperature returns to normal, the lamp will automatically release the

alarm. At this time, the DIM dial can be rotated to change the brightness.

9.3 When the temperature sensor failure symbol appears on the display, it means that the

high temperature alarm function of the machine has failed.

## Technical Data

LED Light	ML30
Adapter	Output: 14.0V 3.4A
Power	37.6W
Brightness Adjusting Range	0%~100%
CRI(≈)	≈96
TLCI(≈)	≈97
Lighting effects mode	A total of 12 types in four categories
Bluetooth Transmission	Distance≈15m
BT Frequency Range	2402.0-2480.0MHz
Max. Transmitting Power	5dbm
Color Temperature	5600K
Working Temperature	-10~40 °C
Weight	587g
Dimension	120*88*88mm (not include handle and reflector)

\* Product design and specifications are subject to change without notice.

## Illumination data

Distance	Test Parameters	0.5m	1m	2m
Bare Bulb	lux	5880	1540	392
	fc	546	143	36.4
With Standard Reflector	lux	45700	8590	1740
	fc	4250	798	161

## Maintenance

This product, except consumables e.g. charger and charger cable, is supported with a one-year warranty. Avoid sudden impacts and the product should be dedusted regularly. Maintenance of the light must be performed by our authorized maintenance department which can provide original accessories.Unauthorized service will void the warranty. If the product had failures or was wetted, do not use it until it is repaired by professionals. Changes made to the specifications or designs may not be reflected in this manual.

## FCC Statement

This device complies with part 15 of the FCC Rules. Operation is subject to the following two conditions: (1) This device may not cause harmful interference, and (2) this device must accept any interference received, including interference that may cause undesired operation.

Any Changes or modifications not expressly approved by the party responsible for compliance could void the user's authority to operate the equipment.

Note: This equipment has been tested and found to comply with the limits for a Class B digital device, pursuant to part 15 of the FCC Rules. These limits are designed to provide reasonable protection against harmful interference in a residential installation. This equipment generates uses and can radiate radio frequency energy and, if not installed and used in accordance with the instructions, may cause harmful interference to radio communications. However, there is no guarantee that interference will not occur in a particular installation. If this equipment does cause harmful interference to radio or television reception, which can be determined by turning the equipment off and on, the user is encouraged to try to correct the interference by one or more of the following measures:

- Reorient or relocate the receiving antenna.
  - Increase the separation between the equipment and receiver.
  - Connect the equipment into an outlet on a circuit different from that to which the receiver is connected.
  - Consult the dealer or an experienced radio/TV technician for help.
- The device has been evaluated to meet general RF exposure requirement. The device can be used in portable exposure condition without restriction.

Warning

Operating frequency:2402MHz – 2480MHz Maximum EIRP Power: 3.45dBm

Declaration of Conformity

GODOX Photo Equipment Co.,Ltd. hereby declares that this equipment are in compliance with the essential requirements and other relevant provisions of Directive 2014/53/EU. In accordance with Article 10(2) and Article 10(10), this product is allowed to be used in all EU member states.For more information of DoC, Please click this web link:

[https://www.godox.com/DOC/Godox\\_ML\\_Series\\_DOC.pdf](https://www.godox.com/DOC/Godox_ML_Series_DOC.pdf)

The device complies with RF specifications when the device used at 0mm from your body.

## 产品保修

尊敬的用户，本保修卡是申请保修服务的重要凭证，请您配合销售商填写并妥善保管，谢谢！

产品信息	型号	产品条码
用户信息	姓名	联系电话
	通信地址	
销售商信息	名称	
	联系电话	
	通信地址	
	销售日期	
备注		

注：此表应由销售商盖章确认。

### 适用产品

本文件适用于相关《产品保修信息》(见后面说明)所列产品,其他非属此范围的产品或部件(如促销品、赠品及其他出厂后附加的部件等)不在此保修承诺内。

### 保修期

产品及部件的相应保修期按相关的《产品保修信息》执行。保修期自产品首次购买日起算,购买日以购买产品时保修卡登记日期为准。

### 如何获得保修服务

您可直接与产品销售商或授权服务机构联系,也可拨打神牛产品售后服务电话,与我们联系,由我们的服务人员为您安排服务。申请保修时,您应提供有效的保修卡作为保修凭证,方可获得保修。如您不能提供有效的保修卡,则在我们确认产品或部件属于保修范围的情况下,也可以为您提供保修,但这不作为我们的义务。

### 不适用保修的情况

如产品存在下列情况,本文件项下的保证和服务将不适用 ①产品或部件超过相应保修期;②错误或不当使用、维护或保管导致的故障或损坏,如:不当搬运;非按产品合理预期用途使用;不当插拔外接设备;跌落或外力挤压;接触或暴露于不当温度、溶剂、酸碱、水浸或潮湿环境;③由非神牛授权机构或人员安装、修理、更改、添加或拆卸造成的故障或损坏;④产品或部件原有识别信息被修改变更或删除;⑤无有效保修卡;⑥使用非合法授权、非标准或非公开发行的软件造成的故障或损坏;⑦因不可抗力或意外事件造成的故障或损坏;⑧其他非因产品本身质量问题导致的故障或损坏。遇上述情况,您应向相关责任方寻求解决,神牛对此不承担任何责任。因非在保修期或保修范围内的部件、附件或软件导致产品不能正常使用的,不是保修范围内的故障。产品使用过程中正常的脱色,磨损和消耗,不是保修范围内的故障。

### 产品保修和服务支持信息

产品的保修期和服务类型按以下《产品保修信息》执行:

产品类别	选件名称	保修期(月)	保修服务类型
部件	电路板	12	客户送修
	电池	3	客户送修
	充电器、电源线,同步线等带电性能的部件。	12	客户送修
其他	如闪光灯管、造型灯泡、外壳、保护罩、锁紧装置、包装等。	无	无保修

神牛产品售后服务电话 0755-29609320-8062

## Warranty

Dear customers, as this warranty card is an important certificate to apply for our maintenance service, please fill in the following form in coordination with the seller and safe-keep it. Thank you!

Product Information	Model	Product Code Number
Customer Information	Name	Contact Number
	Address	
Seller Information	Name	
	Contact Number	
	Address	
	Date of Sale	
Note:		

Note: This form shall be sealed by the seller.

### Applicable Products

The document applies to the products listed on the Product Maintenance Information (see below for further information). Other products or accessories (e.g. promotional items, giveaways and additional accessories attached, etc.) are not included in this warranty scope.

### Warranty Period

The warranty period of products and accessories is implemented according to the relevant Product Maintenance Information. The warranty period is calculated from the day(purchase date) when the product is bought for the first time, And the purchase date is considered as the date registered on the warranty card when buying the product.

### How to Get the Maintenance Service

If maintenance service is needed, you can directly contact the product distributor or authorized service institutions. You can also contact the Godox after-sale service call and we will offer you service. When applying for maintenance service, you should provide valid warranty card. If you cannot provide valid warranty card, we may offer you maintenance service once confirmed that the product or accessory is involved in the maintenance scope, but that shall not be considered as our obligation.

### Inapplicable Cases

The guarantee and service offered by this document are not applicable in the following cases: ①. The product or accessory has expired its warranty period; ②. Breakage or damage caused by inappropriate usage, maintenance or preservation, such as improper packing, improper usage, improper plugging in/out external equipment, falling off or squeezing by external force, contacting or exposing to the improper temperature, solvent, acid, base, flooding and damp environments, etc; ③. Breakage or damage caused by non-authorized institution or staff in the process of installation, maintenance, alternation, addition and detachment; ④. The original identifying information of product or accessory is modified, alternated, or removed; ⑤. No valid warranty card; ⑥. Breakage or damage caused by using illegally authorized, nonstandard or non-public released software; ⑦. Breakage or damage caused by force majeure or accident; ⑧. Breakage or damage that could not be attributed to the product itself. Once met these situations above, you should seek solutions from the related responsible parties and Godox assumes no responsibility. The damage caused by parts, accessories and software that beyond the warranty period or scope is not included in our maintenance scope. The normal discoloration, abrasion and consumption are not the breakage within the maintenance scope.